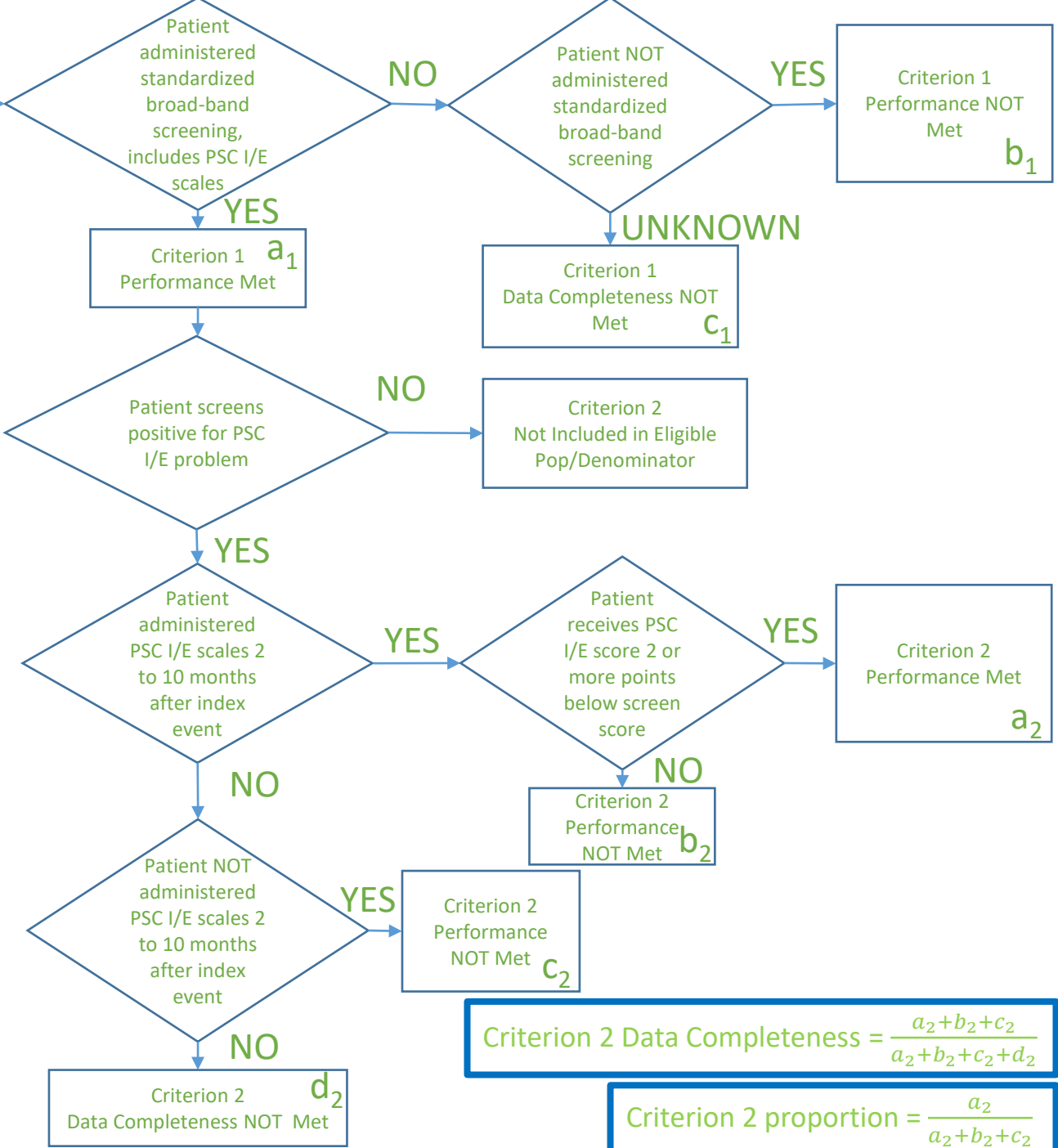


$$\text{Criterion 1 Data Completeness} = \frac{a_1 + b_1}{a_1 + b_1 + c_1}$$

$$\text{Criterion 1 proportion} = \frac{a_1}{a_1 + b_1}$$



$$\text{Criterion 2 Data Completeness} = \frac{a_2 + b_2 + c_2}{a_2 + b_2 + c_2 + d_2}$$

$$\text{Criterion 2 proportion} = \frac{a_2}{a_2 + b_2 + c_2}$$