

Quality ID #493 (NQF 3620): Adult Immunization Status

2023 COLLECTION TYPE: MIPS CLINICAL QUALITY MEASURES (CQMS)

MEASURE TYPE: Process

DESCRIPTION:
Percentage of patients 19 years of age and older who are up-to-date on recommended routine vaccines for influenza; tetanus and diphtheria (Td) or tetanus, diphtheria and acellular pertussis (Tdap); zoster; and pneumococcal.

INSTRUCTIONS:
This measure is to be submitted a minimum of **once per performance period** for all patients 19 years of age and older on the date of the encounter. This measure may be submitted by Merit-based Incentive Payment System (MIPS) eligible clinicians who perform the quality actions described in the measure for patients age 19 years of age and older based on the services provided and the measure-specific denominator coding.

NOTE: Patient encounters for this measure conducted via telehealth (e.g., encounters coded with GQ, GT, 95, or POS 02 modifiers) are allowable.

This measure will be calculated with 4 performance rates:

- 1) Percentage of patients (19 years of age and older on the date of the encounter) who received an influenza vaccine on or between July 1 of the year prior to the measurement period and June 30 of the measurement period
- 2) Percentage of patients (19 years of age and older on the date of the encounter) who received at least 1 tetanus and diphtheria (Td) vaccine or 1 tetanus, diphtheria, and pertussis (Tdap) vaccine between 9 years prior to the encounter and the end of the measurement period
- 3) Percentage of patients (50 years of age and older on the date of the encounter) who received at least 1 dose of the herpes zoster live vaccine or 2 doses of the herpes zoster recombinant vaccine anytime on or after the patients' 50th birthday
- 4) Percentage of patients (66 years of age or older on the date of the encounter) who were administered any pneumococcal conjugate vaccine or polysaccharide vaccine, on or after their 60th birthday and before the end of the measurement period

NOTE: Submission of the 4 performance rates is required for this measure. A weighted average, which is the sum of the performance numerator values divided by the sum of performance denominator values, will be used for performance.

Measure Submission Type:

Measure data may be submitted by individual MIPS eligible clinicians, groups, or third party intermediaries. The listed denominator criteria are used to identify the intended patient population. The numerator options included in this specification are used to submit the quality actions as allowed by the measure. The quality data codes listed do not need to be submitted by MIPS eligible clinicians, groups, or third party intermediaries that utilize this modality for submissions; however, these codes may be submitted for those third party intermediaries that utilize Medicare Part B claims data. For more information regarding Application Programming Interface (API), please refer to the Quality Payment Program (QPP) website.

DENOMINATOR (SUBMISSION CRITERIA 1):

Patients 19 years of age and older on the date of the encounter with a visit during the measurement period.

DENOMINATOR NOTE: *Signifies that this CPT Category I code is a non-covered service under the Medicare Part B Physician Fee Schedule (PFS). These non-covered services should be counted in the denominator population for MIPS CQMs.

Denominator Criteria (Eligible Cases 1):

Patients age 19 and older on the date of the encounter

AND

Patient encounter during the performance period (CPT): 90945, 90947, 90957, 90958, 90959, 90960, 90961, 90962, 90965, 90966, 90969, 90970, 99202, 99203, 99204, 99205, 99212, 99213, 99214, 99215, 99242*, 99243*, 99244*, 99245*, 99304, 99305, 99306, 99307, 99308, 99309, 99310, 99315, 99316, 99341, 99342, 99344, 99345, 99347, 99348, 99349, 99350, 99385*, 99386*, 99387*, 99395*, 99396*, 99397*, 99401*, 99402*, 99403*, 99404*, 99411*, 99412*, 99429*, 99512*, G0438, G0439

AND NOT

DENOMINATOR EXCLUSIONS:

Active chemotherapy during the measurement period:

- Chemotherapy Encounter (ICD-10-CM): Z51.0, Z51.11, Z51.12
- Chemotherapy Procedure (CPT or HCPCS): 96401, 96402, 96405, 96406, 96409, 96413, 96416, 96420, 96422, 96425, 96440, 96450, 96521, 96522, 96523, 96542, 96549

OR

Bone marrow transplant during the measurement period (ICD-10-PCS): 30233AZ, 30233G0, 30233G2, 30233G3, 30233G4, 30233X0, 30233X2, 30233X3, 30233X4, 30233Y0, 30233Y2, 30233Y3, 30233Y4, 30243AZ, 30243G0, 30243G2, 30243G3, 30243G4, 30243X0, 30243X2, 30243X3, 30243X4, 30243Y0, 30243Y2, 30243Y3, 30243Y4

OR

History of immunocompromising conditions, cochlear implants, anatomic or functional asplenia, sickle cell anemia & Hemoglobin (HB)-S disease or cerebrospinal fluid leaks any time during the patient's history prior to or during the measurement period:

- Anatomic or Functional Asplenia (ICD-10-CM): Q89.01
- Cerebrospinal Fluid Leak (ICD-10-CM): G96.0, G96.00, G96.01, G96.02, G96.08, G96.09, G97.0
- Cochlear Implant (CPT): 69930
- Cochlear Implant Device (HCPCS): L8614, L8619, L8627, L8628
- Cochlear Implant Diagnosis (ICD-10-CM): Z96.20, Z96.21
- Immunocompromising Conditions (ICD-10-CM): B20, B59, B97.35, C80.2, C88.8, C94.40, C94.41, C94.42, C94.6, D46.22, D47.1, D47.9, D47.Z1, D47.Z9, D61.09, D61.810, D61.811, D61.818, D70.0, D70.1, D70.2, D70.4, D70.8, D70.9, D71, D72.0, D72.810, D72.818, D72.819, D73.81, D75.81, D76.1, D76.2, D76.3, D80.0, D80.1, D80.2, D80.3, D80.4, D80.5, D80.6, D80.7, D80.8, D80.9, D81.0, D81.1, D81.2, D81.4, D81.6, D81.7, D81.89, D81.9, D82.0, D82.1, D82.2, D82.3, D82.4, D82.8, D82.9, D83.0, D83.1, D83.2, D83.8, D83.9, D84.0, D84.1, D84.8, D84.81, D84.821, D84.822, D84.89, D84.9, D89.3, D89.810, D89.811, D89.812, D89.813, D89.82, D89.89, D89.9, E40, E41, E42, E43, I12.0, I13.11, I13.2, K91.2, M35.9, N18.5, N18.6, T86.00, T86.01, T86.02, T86.03, T86.09, T86.10, T86.11, T86.12, T86.13, T86.19, T86.20, T86.21, T86.22, T86.23, T86.290, T86.298, T86.30, T86.31, T86.32, T86.33, T86.39, T86.40, T86.41, T86.42, T86.43, T86.49, T86.5, T86.810, T86.811, T86.812, T86.818, T86.819, T86.830, T86.831, T86.832, T86.838, T86.839, T86.850, T86.851, T86.852, T86.858, T86.859, T86.890, T86.891, T86.892, T86.898, T86.899, T86.90, T86.91, T86.92, T86.93, T86.99, Z21, Z48.21, Z48.22, Z48.23, Z48.24, Z48.280, Z48.290, Z48.298, Z49.01, Z49.02, Z49.31, Z94.0, Z94.1, Z94.2, Z94.3, Z94.4, Z94.81, Z94.82, Z94.83, Z94.84, Z94.89, Z99.2
- Sickle Cell Anemia and HB-S Disease (ICD-10-CM): D57.00, D57.01, D57.02, D57.1, D57.20, D57.211, D57.212, D57.219, D57.40, D57.411, D57.412, D57.419, D57.80, D57.811, D57.812, D57.819

OR

In hospice or using hospice services during the measurement period (HCPCS): M1167

NUMERATOR (SUBMISSION CRITERIA 1):

Patients in Denominator 1 who received an influenza vaccine on or between July 1 of the year prior to the measurement period and June 30 of the measurement period.

NUMERATOR NOTE: Patient reported vaccine receipt, when recorded in the medical record, is acceptable for meeting the numerator.

Numerator Options:

Performance Met:

Patient received an influenza vaccine on or between July 1 of the year prior to the measurement period and June 30 of the measurement period
(M1168)

OR

Denominator Exception:

Documentation of medical reason(s) for not administering influenza vaccine (e.g., prior anaphylaxis due to the influenza vaccine)
(M1169)

OR

Performance Not Met:

Patient did not receive an influenza vaccine on or between July 1 of the year prior to the measurement period and June 30 of the measurement period
(M1170)

DENOMINATOR (SUBMISSION CRITERIA 2):

Patients 19 years of age and older on the date of the encounter with a visit during the measurement period.

DENOMINATOR NOTE: *Signifies that this CPT Category I code is a non-covered service under the Medicare Part B Physician Fee Schedule (PFS). These non-covered services should be counted in the denominator population for MIPS CQMs.

Denominator Criteria (Eligible Cases 2):

Patients age 19 and older on the date of the encounter

AND

Patient encounter during the performance period (CPT): 90945, 90947, 90957, 90958, 90959, 90960, 90961, 90962, 90965, 90966, 90969, 90970, 99202, 99203, 99204, 99205, 99212, 99213, 99214, 99215, 99242*, 99243*, 99244*, 99245*, 99304, 99305, 99306, 99307, 99308, 99309, 99310, 99315, 99316, 99341, 99342, 99344, 99345, 99347, 99348, 99349, 99350, 99385*, 99386*, 99387*, 99395*, 99396*, 99397*, 99401*, 99402*, 99403*, 99404*, 99411*, 99412*, 99429*, 99512*, G0438, G0439

AND NOT

DENOMINATOR EXCLUSIONS:

Active chemotherapy during the measurement period:

- Chemotherapy Encounter (ICD-10-CM): Z51.0, Z51.11, Z51.12
- Chemotherapy Procedure (CPT or HCPCS): 96401, 96402, 96405, 96406, 96409, 96413, 96416, 96420, 96422, 96425, 96440, 96450, 96521, 96522, 96523, 96542, 96549

OR

Bone marrow transplant during the measurement period (ICD-10-PCS): 30233AZ, 30233G0, 30233G2, 30233G3, 30233G4, 30233X0, 30233X2, 30233X3, 30233X4, 30233Y0, 30233Y2, 30233Y3, 30233Y4, 30243AZ, 30243G0, 30243G2, 30243G3, 30243G4, 30243X0, 30243X2, 30243X3, 30243X4, 30243Y0, 30243Y2, 30243Y3, 30243Y4

OR

History of immunocompromising conditions, cochlear implants, anatomic or functional asplenia, sickle

cell anemia & HB-S disease or cerebrospinal fluid leaks any time during the patient's history prior to or during the measurement period:

- Anatomic or Functional Asplenia (ICD-10-CM): Q89.01
- Cerebrospinal Fluid Leak (ICD-10-CM): G96.0, G96.00, G96.01, G96.02, G96.08, G96.09, G97.0
- Cochlear Implant (CPT): 69930
- Cochlear Implant Device (HCPCS): L8614, L8619, L8627, L8628
- Cochlear Implant Diagnosis (ICD-10-CM): Z96.20, Z96.21
- Immunocompromising Conditions (ICD-10-CM): B20, B59, B97.35, C80.2, C88.8, C94.40, C94.41, C94.42, C94.6, D46.22, D47.1, D47.9, D47.Z1, D47.Z9, D61.09, D61.810, D61.811, D61.818, D70.0, D70.1, D70.2, D70.4, D70.8, D70.9, D71, D72.0, D72.810, D72.818, D72.819, D73.81, D75.81, D76.1, D76.2, D76.3, D80.0, D80.1, D80.2, D80.3, D80.4, D80.5, D80.6, D80.7, D80.8, D80.9, D81.0, D81.1, D81.2, D81.4, D81.6, D81.7, D81.89, D81.9, D82.0, D82.1, D82.2, D82.3, D82.4, D82.8, D82.9, D83.0, D83.1, D83.2, D83.8, D83.9, D84.0, D84.1, D84.8, D84.81, D84.821, D84.822, D84.89, D84.9, D89.3, D89.810, D89.811, D89.812, D89.813, D89.82, D89.89, D89.9, E40, E41, E42, E43, I12.0, I13.11, I13.2, K91.2, M35.9, N18.5, N18.6, T86.00, T86.01, T86.02, T86.03, T86.09, T86.10, T86.11, T86.12, T86.13, T86.19, T86.20, T86.21, T86.22, T86.23, T86.290, T86.298, T86.30, T86.31, T86.32, T86.33, T86.39, T86.40, T86.41, T86.42, T86.43, T86.49, T86.5, T86.810, T86.811, T86.812, T86.818, T86.819, T86.830, T86.831, T86.832, T86.838, T86.839, T86.850, T86.851, T86.852, T86.858, T86.859, T86.890, T86.891, T86.892, T86.898, T86.899, T86.90, T86.91, T86.92, T86.93, T86.99, Z21, Z48.21, Z48.22, Z48.23, Z48.24, Z48.280, Z48.290, Z48.298, Z49.01, Z49.02, Z49.31, Z94.0, Z94.1, Z94.2, Z94.3, Z94.4, Z94.81, Z94.82, Z94.83, Z94.84, Z94.89, Z99.2
- Sickle Cell Anemia and HB-S Disease (ICD-10-CM): D57.00, D57.01, D57.02, D57.1, D57.20, D57.211, D57.212, D57.219, D57.40, D57.411, D57.412, D57.419, D57.80, D57.811, D57.812, D57.819

OR

In hospice or using hospice services during the measurement period (HCPCS): M1167

NUMERATOR (SUBMISSION CRITERIA 2):

Patients in Denominator 2 who received at least 1 Td vaccine or 1 Tdap vaccine between 9 years prior to the encounter and the end of the measurement period.

NUMERATOR NOTE: Patient reported vaccine receipt, when recorded in the medical record, is acceptable for meeting the numerator.

Numerator Options:

Performance Met:

Patient received at least one Td vaccine or one Tdap vaccine between nine years prior to the encounter and the end of the measurement period **(M1171)**

OR

Denominator Exception:

Documentation of medical reason(s) for not administering Td or Tdap vaccine (e.g., prior anaphylaxis due to the Td or Tdap vaccine or history of encephalopathy within seven days after a previous dose of a Td-containing vaccine) **(M1172)**

OR

Performance Not Met:

Patient did not receive at least one Td vaccine or one Tdap vaccine between nine years prior to the encounter and the end of the measurement period

(M1173):

DENOMINATOR (SUBMISSION CRITERIA 3):

Patients 50 years of age and older on the date of the encounter with a visit during the measurement period.

DENOMINATOR NOTE: *Signifies that this CPT Category I code is a non-covered service under the Medicare Part B Physician Fee Schedule (PFS). These non-covered services should be counted in the denominator population for MIPS CQMs.

Denominator Criteria (Eligible Cases 3):

Patients age 50 and older on the date of the encounter.

AND

Patient encounter during the performance period (CPT): 90945, 90947, 90960, 90961, 90962, 90966, 90970, 99202, 99203, 99204, 99205, 99212, 99213, 99214, 99215, 99242*, 99243*, 99244*, 99245*, 99304, 99305, 99306, 99307, 99308, 99309, 99310, 99315, 99316, 99341, 99342, 99344, 99345, 99347, 99348, 99349, 99350, 99386*, 99387*, 99396*, 99397*, 99401*, 99402*, 99403*, 99404*, 99411*, 99412*, 99429*, 99512*, G0438, G0439

AND NOT

DENOMINATOR EXCLUSIONS:

Active chemotherapy during the measurement period:

- Chemotherapy Encounter (ICD-10-CM): Z51.0, Z51.11, Z51.12
- Chemotherapy Procedure (CPT or HCPCS): 96401, 96402, 96405, 96406, 96409, 96413, 96416, 96420, 96422, 96425, 96440, 96450, 96521, 96522, 96523, 96542, 96549

OR

Bone marrow transplant during the measurement period (ICD-10-PCS): 30233AZ, 30233G0, 30233G2, 30233G3, 30233G4, 30233X0, 30233X2, 30233X3, 30233X4, 30233Y0, 30233Y2, 30233Y3, 30233Y4, 30243AZ, 30243G0, 30243G2, 30243G3, 30243G4, 30243X0, 30243X2, 30243X3, 30243X4, 30243Y0, 30243Y2, 30243Y3, 30243Y4

OR

History of immunocompromising conditions, cochlear implants, anatomic or functional asplenia, sickle cell anemia & HB-S disease or cerebrospinal fluid leaks any time during the patient's history prior to or during the measurement period:

- Anatomic or Functional Asplenia (ICD-10-CM): Q89.01
- Cerebrospinal Fluid Leak (ICD-10-CM): G96.0, G96.00, G96.01, G96.02, G96.08, G96.09, G97.0
- Cochlear Implant (CPT): 69930
- Cochlear Implant Device (HCPCS): L8614, L8619, L8627, L8628
- Cochlear Implant Diagnosis (ICD-10-CM): Z96.20, Z96.21
- Immunocompromising Conditions (ICD-10-CM): B20, B59, B97.35, C80.2, C88.8, C94.40, C94.41, C94.42, C94.6, D46.22, D47.1, D47.9, D47.Z1, D47.Z9, D61.09, D61.810, D61.811, D61.818, D70.0, D70.1, D70.2, D70.4, D70.8, D70.9, D71, D72.0, D72.810, D72.818, D72.819, D73.81, D75.81, D76.1, D76.2, D76.3, D80.0, D80.1, D80.2, D80.3, D80.4, D80.5, D80.6, D80.7, D80.8, D80.9, D81.0, D81.1, D81.2, D81.4, D81.6, D81.7, D81.89, D81.9, D82.0, D82.1, D82.2, D82.3, D82.4, D82.8, D82.9, D83.0, D83.1, D83.2, D83.8, D83.9, D84.0, D84.1, D84.8, D84.81, D84.821, D84.822, D84.89, D84.9, D89.3, D89.810, D89.811, D89.812, D89.813, D89.82, D89.89, D89.9, E40, E41, E42, E43, I12.0, I13.11, I13.2, K91.2, M35.9, N18.5, N18.6, T86.00, T86.01, T86.02, T86.03, T86.09, T86.10, T86.11, T86.12, T86.13, T86.19, T86.20, T86.21, T86.22, T86.23, T86.290, T86.298, T86.30, T86.31, T86.32, T86.33, T86.39, T86.40, T86.41, T86.42, T86.43, T86.49, T86.5, T86.810, T86.811, T86.812, T86.818, T86.819, T86.830, T86.831, T86.832, T86.838, T86.839, T86.850, T86.851, T86.852, T86.858, T86.859, T86.890, T86.891, T86.892, T86.898, T86.899, T86.90, T86.91, T86.92, T86.93, T86.99, Z21, Z48.21, Z48.22, Z48.23, Z48.24, Z48.280, Z48.290, Z48.298, Z49.01, Z49.02, Z49.31, Z94.0, Z94.1, Z94.2, Z94.3, Z94.4, Z94.81, Z94.82, Z94.83, Z94.84, Z94.89, Z99.2

- Sickle Cell Anemia and HB-S Disease (ICD-10-CM): D57.00, D57.01, D57.02, D57.1, D57.20, D57.211, D57.212, D57.219, D57.40, D57.411, D57.412, D57.419, D57.80, D57.811, D57.812, D57.819

OR

In hospice or using hospice services during the measurement period (HCPCS): M1167

NUMERATOR (SUBMISSION CRITERIA 3):

Patients in Denominator 3 who received at least 1 dose of the herpes zoster live vaccine or 2 doses of the herpes zoster recombinant vaccine anytime on or after the patients' 50th birthday

NUMERATOR NOTE: *Patient reported vaccine receipt, when recorded in the medical record, is acceptable for meeting the numerator.*

Numerator Options:

Performance Met:

Patient received at least one dose of the herpes zoster live vaccine or two doses of the herpes zoster recombinant vaccine (at least 28 days apart) anytime on or after the patient's 50th birthday before or during the measurement period **(M1174)**.

OR

Denominator Exception:

Documentation of medical reason(s) for not administering zoster vaccine (e.g., prior anaphylaxis due to the zoster vaccine) **(M1175)**

OR

Performance Not Met:

Patient did not receive at least one dose of the herpes zoster live vaccine or two doses of the herpes zoster recombinant vaccine (at least 28 days apart) anytime on or after the patient's 50th birthday before or during the measurement period **(M1176)**.

DENOMINATOR (SUBMISSION CRITERIA 4):

Patients 66 years of age or older on the date of the encounter with a visit during the measurement period.

DENOMINATOR NOTE: *Signifies that this CPT Category I code is a non-covered service under the Medicare Part B Physician Fee Schedule (PFS). These non-covered services should be counted in the denominator population for MIPS CQMs.

Denominator Criteria (Eligible Cases 4):

Patients age 66 and older on the date of the encounter

AND

Patient encounter during the performance period (CPT): 90945, 90947, 90960, 90961, 90962, 90966, 90970, 99202, 99203, 99204, 99205, 99212, 99213, 99214, 99215, 99242*, 99243*, 99244*, 99245*, 99304, 99305, 99306, 99307, 99308, 99309, 99310, 99315, 99316, 99341, 99342, 99344, 99345, 99347, 99348, 99349, 99350, 99387*, 99397*, 99401*, 99402*, 99403*, 99404*, 99411*, 99412*, 99429*, 99512*, G0438, G0439

AND NOT

DENOMINATOR EXCLUSIONS:

Active chemotherapy during the measurement period:

- Chemotherapy Encounter (ICD-10-CM): Z51.0, Z51.11, Z51.12
- Chemotherapy Procedure (CPT or HCPCS): 96401, 96402, 96405, 96406, 96409, 96413, 96416, 96420, 96422, 96425, 96440, 96450, 96521, 96522, 96523, 96542, 96549

OR

Bone marrow transplant during the measurement period (ICD-10-PCS): 30233AZ, 30233G0, 30233G2, 30233G3, 30233G4, 30233X0, 30233X2, 30233X3, 30233X4, 30233Y0, 30233Y2, 30233Y3, 30233Y4, 30243AZ, 30243G0, 30243G2, 30243G3, 30243G4, 30243X0, 30243X2, 30243X3, 30243X4, 30243Y0, 30243Y2, 30243Y3, 30243Y4

OR

History of immunocompromising conditions, cochlear implants, anatomic or functional asplenia, sickle cell anemia & HB-S disease or cerebrospinal fluid leaks any time during the patient's history prior to or during the measurement period:

- Anatomic or Functional Asplenia (ICD-10-CM): Q89.01
- Cerebrospinal Fluid Leak (ICD-10-CM): G96.0, G96.00, G96.01, G96.02, G96.08, G96.09, G97.0
- Cochlear Implant (CPT): 69930
- Cochlear Implant Device (HCPCS): L8614, L8619, L8627, L8628
- Cochlear Implant Diagnosis (ICD-10-CM): Z96.20, Z96.21
- Immunocompromising Conditions (ICD-10-CM): B20, B59, B97.35, C80.2, C88.8, C94.40, C94.41, C94.42, C94.6, D46.22, D47.1, D47.9, D47.Z1, D47.Z9, D61.09, D61.810, D61.811, D61.818, D70.0, D70.1, D70.2, D70.4, D70.8, D70.9, D71, D72.0, D72.810, D72.818, D72.819, D73.81, D75.81, D76.1, D76.2, D76.3, D80.0, D80.1, D80.2, D80.3, D80.4, D80.5, D80.6, D80.7, D80.8, D80.9, D81.0, D81.1, D81.2, D81.4, D81.6, D81.7, D81.89, D81.9, D82.0, D82.1, D82.2, D82.3, D82.4, D82.8, D82.9, D83.0, D83.1, D83.2, D83.8, D83.9, D84.0, D84.1, D84.8, D84.81, D84.821, D84.822, D84.89, D84.9, D89.3, D89.810, D89.811, D89.812, D89.813, D89.82, D89.89, D89.9, E40, E41, E42, E43, I12.0, I13.11, I13.2, K91.2, M35.9, N18.5, N18.6, T86.00, T86.01, T86.02, T86.03, T86.09, T86.10, T86.11, T86.12, T86.13, T86.19, T86.20, T86.21, T86.22, T86.23, T86.290, T86.298, T86.30, T86.31, T86.32, T86.33, T86.39, T86.40, T86.41, T86.42, T86.43, T86.49, T86.5, T86.810, T86.811, T86.812, T86.818, T86.819, T86.830, T86.831, T86.832, T86.838, T86.839, T86.850, T86.851, T86.852, T86.858, T86.859, T86.890, T86.891, T86.892, T86.898, T86.899, T86.90, T86.91, T86.92, T86.93, T86.99, Z21, Z48.21, Z48.22, Z48.23, Z48.24, Z48.280, Z48.290, Z48.298, Z49.01, Z49.02, Z49.31, Z94.0, Z94.1, Z94.2, Z94.3, Z94.4, Z94.81, Z94.82, Z94.83, Z94.84, Z94.89, Z99.2
- Sickle Cell Anemia and HB-S Disease (ICD-10-CM): D57.00, D57.01, D57.02, D57.1, D57.20, D57.211, D57.212, D57.219, D57.40, D57.411, D57.412, D57.419, D57.80, D57.811, D57.812, D57.819

OR

In hospice or using hospice services during the measurement period (HCPCS): M1167

NUMERATOR (SUBMISSION CRITERIA 4):

Patients in Denominator 4 who were administered any pneumococcal conjugate vaccine or polysaccharide vaccine, on or after their 60th birthday and before the end of the measurement period

NUMERATOR NOTE: *The measure provides credit for adults 66 years of age and older who have received any pneumococcal vaccine on or after the patient's 60th birthday.*

Patient reported vaccine receipt, when recorded in the medical record, is acceptable for meeting the numerator.

Numerator Options:

Performance Met:

Patient received any pneumococcal conjugate or polysaccharide vaccine on or after their 60th birthday and before the end of the

OR

Denominator Exception:

measurement period **(M1177)**

Documentation of medical reason(s) for not administering pneumococcal vaccine (e.g., prior anaphylaxis due to the pneumococcal vaccine) **(M1178)**

OR

Performance Not Met:

Patient did not receive any pneumococcal conjugate or polysaccharide vaccine, on or after their 60th birthday and before or during measurement period **(M1179)**

RATIONALE:

For adults, the Advisory Committee on Immunization Practices (ACIP) recommends routine vaccination against influenza, tetanus, diphtheria and pertussis for all adults, while vaccines for zoster and pneumococcal disease are recommended for older adults (Kim, et al. 2017). These vaccines are recommended to prevent serious diseases. Healthy People 2020, which provides science-based, 10-year national objectives for improving the health of all Americans, recommends increasing the percentage of adults who are vaccinated against influenza, zoster and pneumococcal disease (U.S. Department of Health and Human Services [HHS], 2017)

Estimates of national vaccination coverage are available through the National Health Interview Survey (NHIS), in which a sample of adults self-report receipt of vaccines. In 2015, 45 percent of adults 19 and older reported that they received the influenza vaccine during the 2014–2015 flu season, well below the Healthy People 2020 target of 70 percent (Williams et al. 2017). 64 percent of adults 65 and older reported having ever received any pneumococcal vaccine, which is below the Healthy People 2020 target of 90 percent (HHS, 2017). In 2015, 31 percent of adults ages 60 and older reported ever receiving the zoster vaccine (HHS, 2017). Although zoster vaccination coverage meets the Healthy People 2020 target of 30 percent coverage, 70 percent of adults are not receiving this recommended vaccination. Although there is no corresponding Healthy People 2020 goal for routine Td or Tdap vaccination among adults, only 62 percent reported receiving any tetanus toxoid-containing vaccination during the past 10 years (HHS, 2017).

There are evidence-based practices for improving adult vaccination coverage. Health care providers can routinely assess patients' vaccination history, implement reminder-recall systems, use standing-order programs and analyze practice- or provider-specific vaccination rates (HHS, 2017). In addition, providing easy access and convenience for adult vaccination (such as walk-in visits or extended hours) within and outside of the health care setting is important for increasing adult vaccine uptake (Ventola, 2016). Leveraging health information technology to share immunization data among patients, providers, pharmacies, retail clinics and public health agencies and registries is also a key strategy for tracking patients' immunization history and keeping them up to date on vaccines (America's Health Insurance Plans, 2015).

References:

Kim, D.K., L.E. Riley, K.H. Harriman, P. Hunter, C.B. Bridges. 2017. "Advisory Committee on Immunization Practices Recommended Immunization Schedule for Adults Aged 19 Years or Older—United States, 2017." *MMWR Morb Mortal Wkly Rep.* 66:136–8. DOI: <http://dx.doi.org/10.15585/mmwr.mm6605e2>

U.S. Department of Health and Human Services. 2017. *HealthyPeople.gov 2020 Topics & Objectives: Immunization and Infectious Diseases.* (September 25) <https://www.healthypeople.gov/2020/topics-objectives/topic/immunization-and-infectious-diseases>

Williams W.W., P. Lu, A. O'Halloran, et al. 2017. "Surveillance of Vaccination Coverage among Adult Populations—United States, 2015." *MMWR Surveill Summ.* 66(No. SS-11):1–28. DOI: <http://dx.doi.org/10.15585/mmwr.ss6611a1>.

Ventola, C.L. 2016. "Immunization in the United States: Recommendations, Barriers, and Measures to Improve

Compliance: Part 2: Adult Vaccinations.” Pharmacy and Therapeutics. 41(8), 492–506.

America’s Health Insurance Plans. 2015. “Stakeholder Roundtable: Improving Adult Immunization Rates.” Retrieved from https://www.ahip.org/wp-content/uploads/2016/04/Vaccine_Report_8.26.15-1.pdf

CLINICAL RECOMMENDATION STATEMENTS:

The Advisory Committee on Immunization Practices recommends annual influenza vaccination; and tetanus, diphtheria and acellular pertussis (Tdap) and/or tetanus and diphtheria (Td) vaccine; herpes zoster vaccine; and pneumococcal vaccine for adults at various ages.

Murthy N, Wodi AP, Bernstein H, McNally V, Cineas S, Ault K. Advisory Committee on Immunization Practices Recommended Immunization Schedule for Adults Aged 19 Years or Older — United States, 2022. MMWR Morb Mortal Wkly Rep 2022;71:229–233. DOI: <http://dx.doi.org/10.15585/mmwr.mm7107a1>.

COPYRIGHT:

Physician Performance Measure (Measures) and related data specifications were developed by the National Committee for Quality Assurance (NCQA). These performance Measures are not clinical guidelines and do not establish a standard of medical care, and have not been tested for all potential applications. NCQA makes no representations, warranties or endorsements about the quality of any organization or clinician who uses or reports performance measures. NCQA has no liability to anyone who relies on measures and specifications or data reflective of performance under such measures and specifications.

The Measures are copyrighted but can be reproduced and distributed, without modification, for noncommercial purposes (e.g., use by healthcare providers in connection with their practices). Commercial use is defined as the sale, licensing, or distribution of the Measures for commercial gain, or incorporation of the Measures into a product or service that is sold, licensed or distributed for commercial gain. All commercial uses or requests for alteration of the measures and specifications must be approved by NCQA and are subject to a license at the discretion of NCQA. NCQA is not responsible for any use of the Measures. © 2022 NCQA. All Rights Reserved.

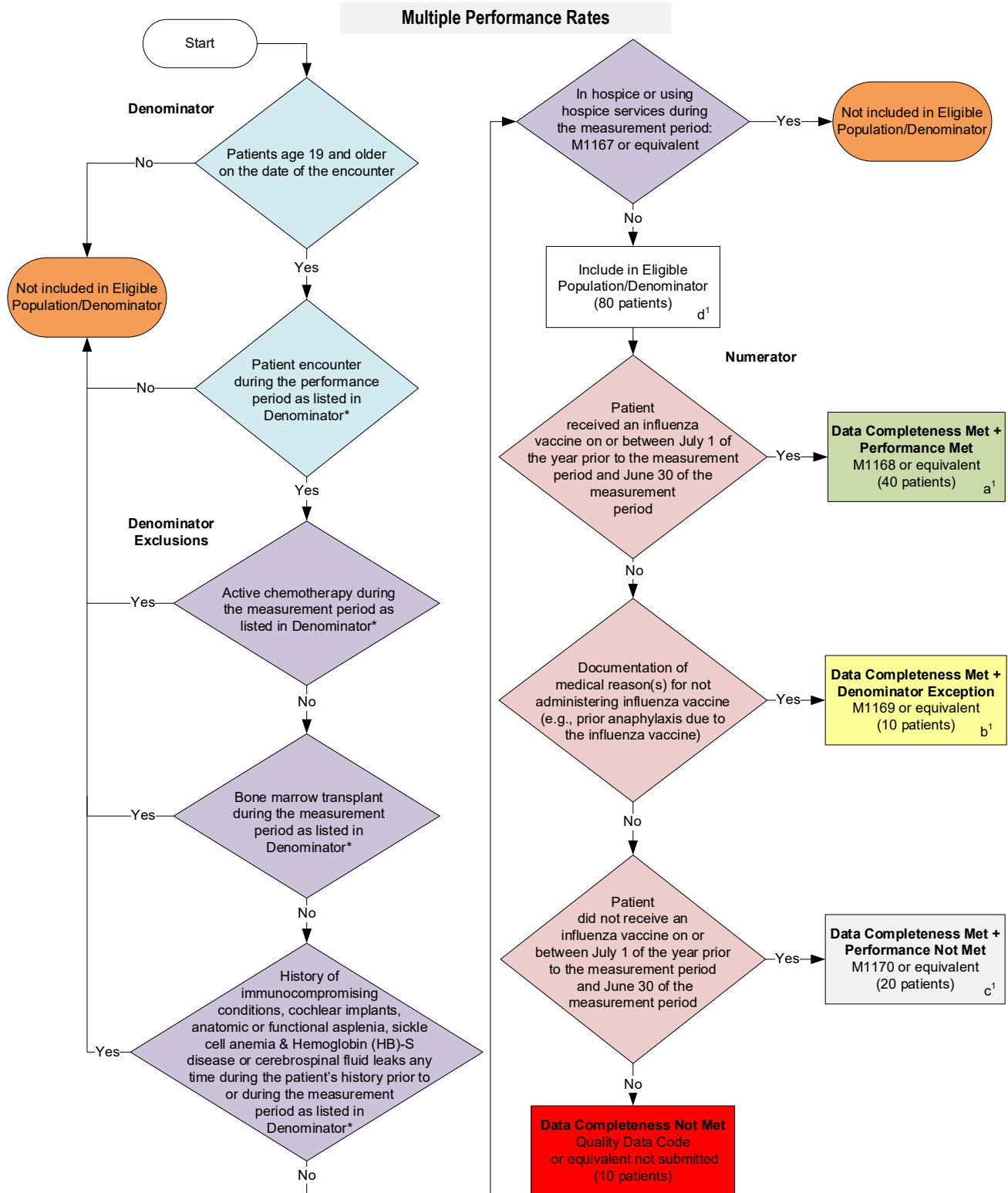
THE MEASURES AND SPECIFICATIONS ARE PROVIDED "AS IS" WITHOUT WARRANTY OF ANY KIND.

Limited proprietary coding is contained in the measure specifications for user convenience. Users of proprietary code sets should obtain all necessary licenses from the owners of the code sets. NCQA disclaims all liability for use or accuracy of any CPT or other codes contained in the specifications.

CPT® contained in the measure specifications is copyright 2004-2022 American Medical Association. LOINC® copyright 2004-2022 Regenstrief Institute, Inc. This material contains SNOMED Clinical Terms® (SNOMED CT®) copyright 2004-2022 International Health Terminology Standards Development Organisation. ICD-10 copyright 2022 World Health Organization. All Rights Reserved

**2023 Clinical Quality Measure Flow for Quality ID #493 (NQF 3620):
Adult Immunization Status
Submission Criteria One**

Disclaimer: Refer to the measure specification for specific coding and instructions to submit this measure.



SAMPLE CALCULATIONS: SUBMISSION CRITERIA ONE

Data Completeness=

$$\frac{\text{Performance Met (a}^1=40 \text{ patients)} + \text{Denominator Exception (b}^1=10 \text{ patients)} + \text{Performance Not Met (c}^1=20 \text{ patients)}}{\text{Eligible Population/Denominator (d}^1=80 \text{ patients)}} = \frac{70 \text{ patients}}{80 \text{ patients}} = 87.50\%$$

Performance Rate=

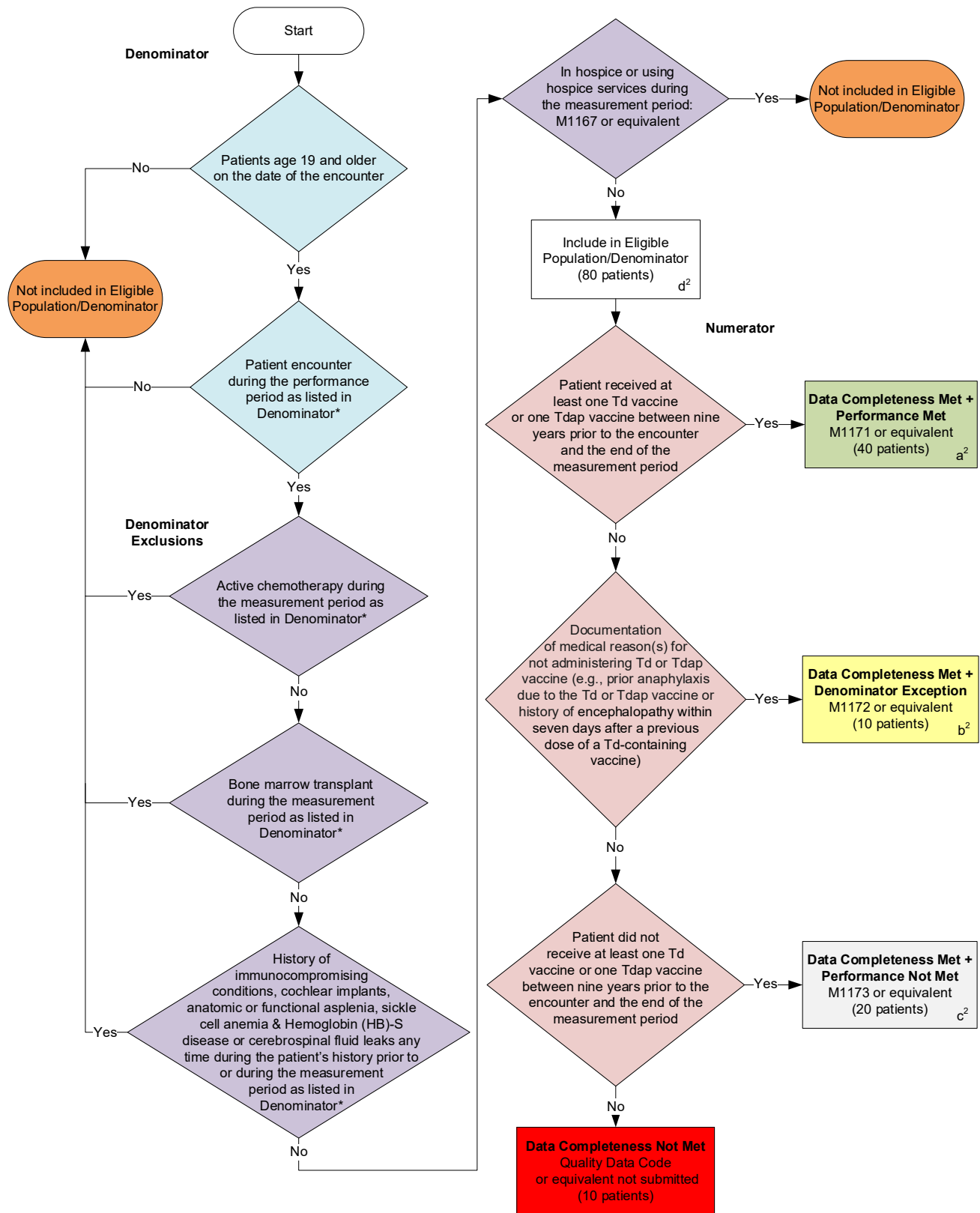
$$\frac{\text{Performance Met (a}^1=40 \text{ patients)}}{\text{Data Completeness Numerator (70 patients) - Denominator Exception (b}^1=10 \text{ patients)}} = \frac{40 \text{ patients}}{60 \text{ patients}} = 66.67\%$$

*See the posted measure specification for specific coding and instructions to submit this measure.

NOTE: Submission Frequency: Patient-Periodic

CPT only copyright 2022 American Medical Association. All rights reserved.
The measure diagrams were developed by CMS as a supplemental resource to be used in conjunction with the measure specifications. They should not be used alone or as a substitution for the measure specification. v7

Submission Criteria Two



SAMPLE CALCULATIONS: SUBMISSION CRITERIA TWO

Data Completeness=

$$\frac{\text{Performance Met (a}^2\text{=40 patients) + Denominator Exception (b}^2\text{=10 patients) + Performance Not Met (c}^2\text{=20 patients)}}{\text{Eligible Population/Denominator (d}^2\text{=80 patients)}} = \frac{70 \text{ patients}}{80 \text{ patients}} = 87.50\%$$

Performance Rate=

$$\frac{\text{Performance Met (a}^2\text{=40 patients)}}{\text{Data Completeness Numerator (70 patients) - Denominator Exception (b}^2\text{=10 patients)}} = \frac{40 \text{ patients}}{60 \text{ patients}} = 66.67\%$$

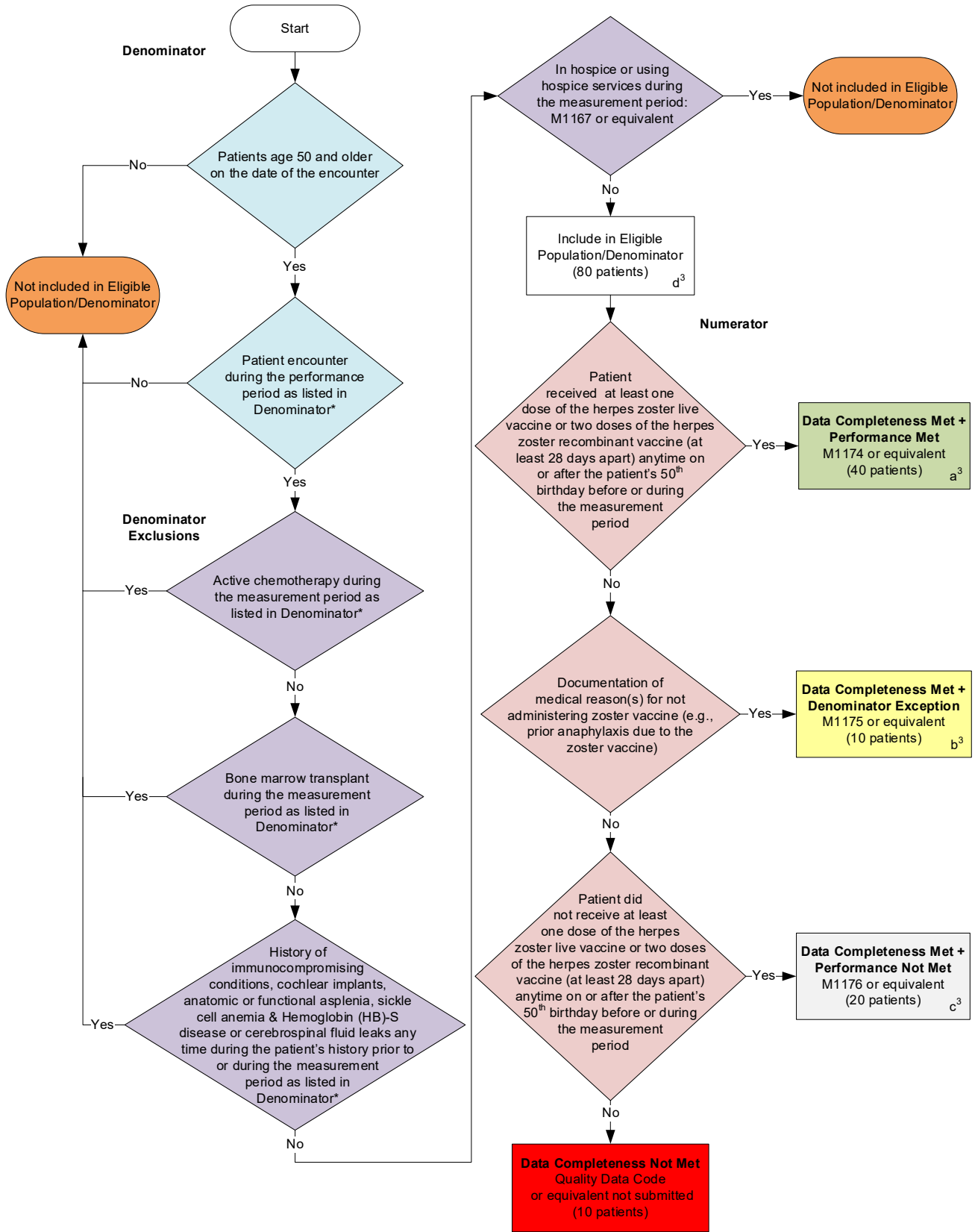
*See the posted measure specification for specific coding and instructions to submit this measure.

NOTE: Submission Frequency: Patient-Periodic

CPT only copyright 2022 American Medical Association. All rights reserved.
The measure diagrams were developed by CMS as a supplemental resource to be used in conjunction with the measure specifications. They should not be used alone or as a substitution for the measure specification.

v7

Submission Criteria Three



SAMPLE CALCULATIONS: SUBMISSION CRITERIA THREE

Data Completeness=

$$\frac{\text{Performance Met (a}^3=40 \text{ patients)} + \text{Denominator Exception (b}^3=10 \text{ patients)} + \text{Performance Not Met (c}^3=20 \text{ patients)}}{\text{Eligible Population/Denominator (d}^3=80 \text{ patients)}} = \frac{70 \text{ patients}}{80 \text{ patients}} = 87.50\%$$

Performance Rate=

$$\frac{\text{Performance Met (a}^3=40 \text{ patients)}}{\text{Data Completeness Numerator (70 patients) - Denominator Exception (b}^3=10 \text{ patients)}} = \frac{40 \text{ patients}}{60 \text{ patients}} = 66.67\%$$

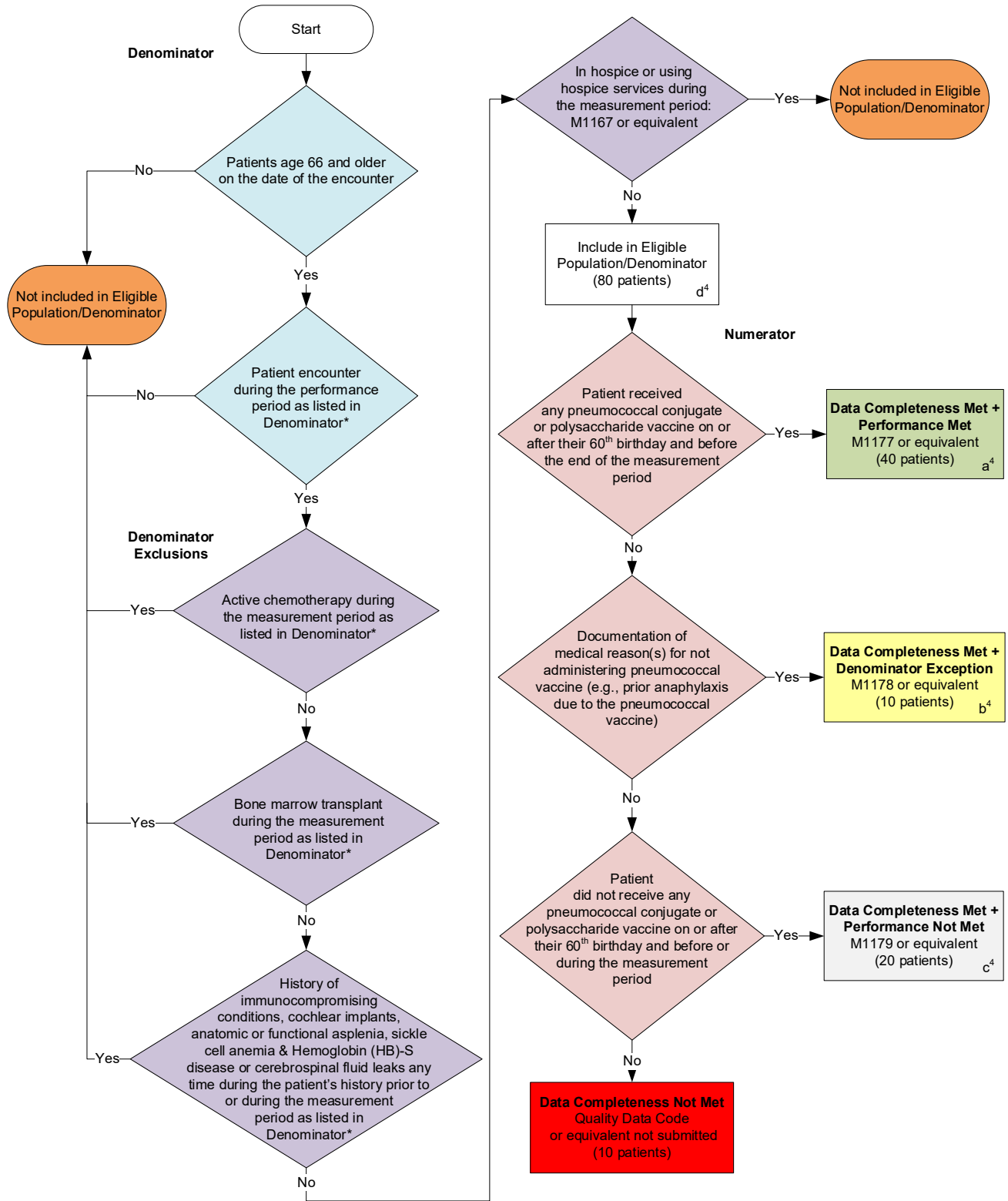
*See the posted measure specification for specific coding and instructions to submit this measure.

NOTE: Submission Frequency: Patient-Periodic

CPT only copyright 2022 American Medical Association. All rights reserved.
The measure diagrams were developed by CMS as a supplemental resource to be used in conjunction with the measure specifications. They should not be used alone or as a substitution for the measure specification.

v7

Submission Criteria Four



SAMPLE CALCULATIONS: SUBMISSION CRITERIA FOUR

Data Completeness=

$$\frac{\text{Performance Met (a}^4\text{=40 patients) + Denominator Exception (b}^4\text{=10 patients) + Performance Not Met (c}^4\text{=20 patients)}}{\text{Eligible Population/Denominator (d}^4\text{=80 patients)}} = \frac{70 \text{ patients}}{80 \text{ patients}} = 87.50\%$$

Performance Rate=

$$\frac{\text{Performance Met (a}^4\text{=40 patients)}}{\text{Data Completeness Numerator (70 patients) - Denominator Exception (b}^4\text{=10 patients)}} = \frac{40 \text{ patients}}{60 \text{ patients}} = 66.67\%$$

*See the posted measure specification for specific coding and instructions to submit this measure.

NOTE: Submission Frequency: Patient-Periodic

CPT only copyright 2022 American Medical Association. All rights reserved.
The measure diagrams were developed by CMS as a supplemental resource to be used in conjunction with the measure specifications. They should not be used alone or as a substitution for the measure specification.

v7

**2023 Clinical Quality Measure Flow Narrative for Quality ID #493 (NQF 3620):
Adult Immunization Status**

Multiple Performance Rates

Disclaimer: Refer to the measure specification for specific coding and instructions to submit this measure.

Submission Criteria One:

1. Start with Denominator
2. Check *Patients age 19 and older on the date of the encounter*.
 - a. If *Patients age 19 and older on the date of the encounter* equals No, do not include in *Eligible Population/Denominator*. Stop processing.
 - b. If *Patient age 19 and older on the date of the encounter* equals Yes, proceed to check *Patient encounter during the performance period as listed in Denominator**.
3. Check *Patient encounter during the performance period as listed in Denominator**:
 - a. If *Patient encounter during the performance period as listed in Denominator** equals No, do not include in *Eligible Population/Denominator*. Stop processing.
 - b. If *Patient encounter during the performance period as listed in Denominator** equals Yes, proceed to check *Active chemotherapy during the measurement period as listed in Denominator**.
4. Check *Active chemotherapy during the measurement period as listed in Denominator**:
 - a. If *Active chemotherapy during the measurement period as listed in Denominator** equals Yes, do not include in *Eligible Population/Denominator*. Stop processing.
 - b. If *Active chemotherapy during the measurement period as listed in Denominator** equals No, proceed to check *Bone marrow transplant during the measurement period as listed in Denominator**.
5. Check *Bone marrow transplant during the measurement period as listed in Denominator**:
 - a. If *Bone marrow transplant during the measurement period as listed in Denominator** equals Yes, do not include in *Eligible Population/Denominator*. Stop processing.
 - b. If *Bone marrow transplant during the measurement period as listed in Denominator** equals No, proceed to check *History of immunocompromising conditions, cochlear implants, anatomic or functional asplenia, sickle cell anemia & Hemoglobin (HB)-S disease or cerebrospinal fluid leaks any time during the patient's history prior to or during the measurement period as listed in Denominator**.
6. Check *History of immunocompromising conditions, cochlear implants, anatomic or functional asplenia, sickle cell anemia & Hemoglobin (HB)-S disease or cerebrospinal fluid leaks any time during the patient's history prior to or during the measurement period as listed in Denominator**:
 - a. If *History of immunocompromising conditions, cochlear implants, anatomic or functional asplenia, sickle cell anemia & Hemoglobin (HB)-S disease or cerebrospinal fluid leaks any time during the patient's history prior to or during the measurement period as listed in Denominator** equals Yes, do not include in *Eligible Population/Denominator*. Stop processing.

- b. If *History of immunocompromising conditions, cochlear implants, anatomic or functional asplenia, sickle cell anemia & Hemoglobin (HB)-S disease or cerebrospinal fluid leaks any time during the patient's history prior to or during the measurement period as listed in Denominator** equals No, proceed to check *In hospice or using hospice services during the measurement period*.
7. Check *In hospice or using hospice services during the measurement period*:
 - a. If *In hospice or using hospice services during the measurement period* equals Yes, do not include in *Eligible Population/Denominator*. Stop processing.
 - b. If *In hospice or using hospice services during the measurement period* equals No, include in *Eligible Population/Denominator*.
8. Denominator Population:
 - Denominator Population is all Eligible Patients in the Denominator. Denominator is represented as Denominator in the Sample Calculation listed at the end of this document. Letter d¹ equals 80 patients in the Sample Calculation.
9. Start Numerator
10. Check *Patient received an influenza vaccine on or between July 1 of the year prior to the measurement period and June 30 of the measurement period*:
 - a. If *Patient received an influenza vaccine on or between July 1 of the year prior to the measurement period and June 30 of the measurement period* equals Yes, include in *Data Completeness Met and Performance Met*.
 - *Data Completeness Met and Performance Met* letter is represented as Data Completeness and Performance Rate in the Sample Calculation listed at the end of this document. Letter a¹ equals 40 patients in Sample Calculation
 - b. If *Patient received an influenza vaccine on or between July 1 of the year prior to the measurement period and June 30 of the measurement period* equals No, proceed to check *Documentation of medical reason(s) for not administering influenza vaccine (e.g., prior anaphylaxis due to the influenza vaccine)*.
11. Check *Documentation of medical reason(s) for not administering influenza vaccine (e.g., prior anaphylaxis due to the influenza vaccine)*:
 - a. If *Documentation of medical reason(s) for not administering influenza vaccine (e.g., prior anaphylaxis due to the influenza vaccine)* equals Yes, include in *Data Completeness Met and Denominator Exception*.
 - *Data Completeness Met and Denominator Exception* is represented as Data Completeness and Performance Rate in the Sample Calculation listed at the end of this document. Letter b¹ equals 10 patients in the Sample Calculation.
 - b. If *Documentation of medical reason(s) for not administering influenza vaccine (e.g., prior anaphylaxis due to the influenza vaccine)* equals No, proceed to check *Patient did not receive an influenza vaccine on or between July 1 of the year prior to the measurement period and June 30 of the measurement period*.
12. Check *Patient did not receive an influenza vaccine on or between July 1 of the year prior to the measurement period and June 30 of the measurement period*:

- a. If *Patient did not receive an influenza vaccine on or between July 1 of the year prior to the measurement period and June 30 of the measurement period* equals Yes, include in *Data Completeness Met and Performance Not Met*.
 - *Data Completeness Met and Performance Not Met* letter is represented as Data Completeness in the Sample Calculation listed at the end of this document. Letter c¹ equals 20 patients in the Sample Calculation.
- b. If *Patient did not receive an influenza vaccine on or between July 1 of the year prior to the measurement period and June 30 of the measurement period* equals No, proceed to check *Data Completeness Not Met*.

13. Check *Data Completeness Not Met*:

- If *Data Completeness Not Met*, the Quality Data Code or equivalent was not submitted. 10 patients have been subtracted from the Data Completeness Numerator in the Sample Calculation.

Sample Calculations: Submission Criteria One

Data Completeness equals Performance Met (a¹ equals 40 patients) plus Denominator Exception (b¹ equals 10 patients) plus Performance Not Met (c¹ equals 20 patients) divided by Eligible Population/Denominator (d¹ equals 80 patients). All equals 70 patients divided by 80 patients. All equals 87.50 percent.

Performance Rate equals Performance Met (a¹ equals 40 patients) divided by Data Completeness Numerator (70 patients) minus Denominator Exception (b¹ equals 10 patients). All equals 40 patients divided by 60 patients. All equals 66.67 percent.

*See the posted measure specification for specific coding and instructions to submit this measure.

Note: Submission Frequency: Patient-Periodic

The measure diagrams were developed by CMS as a supplemental resource to be used in conjunction with the measure specifications. They should not be used alone or as a substitution for the measure specification.

Submission Criteria Two:

1. Start with Denominator
2. Check *Patients age 19 and older on the date of the encounter*.
 - a. If *Patients age 19 and older on the date of the encounter* equals No, do not include in *Eligible Population/Denominator*. Stop processing.
 - b. If *Patients age 19 and older on the date of the encounter* equals Yes, proceed to check *Patient encounter during the performance period as listed in Denominator**.
3. Check *Patient encounter during the performance period as listed in Denominator**:
 - a. If *Patient encounter during the performance period as listed in Denominator** equals No, do not include in *Eligible Population/Denominator*. Stop processing.
 - b. If *Patient encounter during the performance period as listed in Denominator** equals Yes, proceed to check *Active chemotherapy during the measurement period as listed in*

*Denominator**.

4. Check *Active chemotherapy during the measurement period as listed in Denominator**:
 - a. If *Active chemotherapy during the measurement period as listed in Denominator** equals Yes, do not include in *Eligible Population/Denominator*. Stop processing.
 - b. If *Active chemotherapy during the measurement period as listed in Denominator** equals No, proceed to check *Bone marrow transplant during the measurement period as listed in Denominator**.
5. Check *Bone marrow transplant during the measurement period as listed in Denominator**:
 - a. If *Bone marrow transplant during the measurement period as listed in Denominator** equals Yes, do not include in *Eligible Population/Denominator*. Stop processing.
 - b. If *Bone marrow transplant during the measurement period as listed in Denominator** equals No, proceed to check *History of immunocompromising conditions, cochlear implants, anatomic or functional asplenia, sickle cell anemia & Hemoglobin (HB)-S disease or cerebrospinal fluid leaks any time during the patient's history prior to or during the measurement period as listed in Denominator**.
6. Check *History of immunocompromising conditions, cochlear implants, anatomic or functional asplenia, sickle cell anemia & Hemoglobin (HB)-S disease or cerebrospinal fluid leaks any time during the patient's history prior to or during the measurement period as listed in Denominator**:
 - a. If *History of immunocompromising conditions, cochlear implants, anatomic or functional asplenia, sickle cell anemia & Hemoglobin (HB)-S disease or cerebrospinal fluid leaks any time during the patient's history prior to or during the measurement period as listed in Denominator** equals Yes, do not include in *Eligible Population/Denominator*. Stop processing.
 - b. If *History of immunocompromising conditions, cochlear implants, anatomic or functional asplenia, sickle cell anemia & Hemoglobin (HB)-S disease or cerebrospinal fluid leaks any time during the patient's history prior to or during the measurement period as listed in Denominator** equals No, proceed to check *In hospice or using hospice services during the measurement period*.
7. Check *In hospice or using hospice services during the measurement period*:
 - a. If *In hospice or using hospice services during the measurement period* equals Yes, do not include in *Eligible Population/Denominator*. Stop processing.
 - b. If *In hospice or using hospice services during the measurement period* equals No, include in *Eligible Population/Denominator*.
8. Denominator Population:
 - Denominator Population is all Eligible Patients in the Denominator. Denominator is represented as Denominator in the Sample Calculation listed at the end of this document. Letter d² equals 80 patients in the Sample Calculation.
9. Start Numerator
10. Check *Patient received at least one Td vaccine or one Tdap vaccine between nine years prior to the encounter and the end of the measurement period*:
 - a. If *Patient received at least one Td vaccine or one Tdap vaccine between nine years prior to the*

encounter and the end of the measurement period equals Yes, include in Data Completeness Met and Performance Met.

- *Data Completeness Met and Performance Met* letter is represented as Data Completeness and Performance Rate in the Sample Calculation listed at the end of this document. Letter a² equals 40 patients in Sample Calculation.
- b. *If Patient received at least one Td vaccine or one Tdap vaccine between nine years prior to the encounter and the end of the measurement period equals No, proceed to check Documentation of medical reason(s) for not administering Td or Tdap vaccine (e.g., prior anaphylaxis due to the Td or Tdap vaccine or history of encephalopathy within seven days after a previous dose of a Td-containing vaccine).*
11. *Check Documentation of medical reason(s) for not administering Td or Tdap vaccine (e.g., prior anaphylaxis due to the Td or Tdap vaccine or history of encephalopathy within seven days after a previous dose of a Td-containing vaccine):*
- a. *If Documentation of medical reason(s) for not administering Td or Tdap vaccine (e.g., prior anaphylaxis due to the Td or Tdap vaccine or history of encephalopathy within seven days after a previous dose of a Td-containing vaccine) equals Yes, include in Data Completeness Met and Denominator Exception.*
- *Data Completeness Met and Denominator Exception* is represented as Data Completeness and Performance Rate in the Sample Calculation listed at the end of this document. Letter b² equals 10 patients in the Sample Calculation.
- b. *If Documentation of medical reason(s) for not administering Td or Tdap vaccine (e.g., prior anaphylaxis due to the Td or Tdap vaccine or history of encephalopathy within seven days after a previous dose of a Td-containing vaccine) equals No, proceed to check Patient did not receive at least one Td vaccine or one Tdap vaccine between nine years prior to the encounter and the end of the measurement period.*
12. *Check Patient did not receive at least one Td vaccine or one Tdap vaccine between nine years prior to the encounter and the end of the measurement period:*
- a. *If Patient did not receive at least one Td vaccine or one Tdap vaccine between nine years prior to the encounter and the end of the measurement period equals Yes, include in Data Completeness Met and Performance Not Met.*
- *Data Completeness Met and Performance Not Met* is represented as Data Completeness in the Sample Calculation listed at the end of this document. Letter c² equals 20 patients in the Sample Calculation.
- b. *If Patient did not receive at least one Td vaccine or one Tdap vaccine between nine years prior to the encounter and the end of the measurement period equals No, proceed to check Data Completeness Not Met.*
13. *Check Data Completeness Not Met:*
- *If Data Completeness Not Met, the Quality Data Code or equivalent was not submitted. 10 patients have been subtracted from the Data Completeness Numerator in the Sample Calculation.*

Sample Calculations: Submission Criteria Two

Data Completeness equals Performance Met (a² equals 40 patients) plus Denominator Exception (b² equals 10 patients)

plus Performance Not Met (c^2 equals 20 patients) divided by Eligible Population/Denominator (d^2 equals 80 patients). All equals 70 patients divided by 80 patients. All equals 87.50 percent.

Performance Rate equals Performance Met (a^2 equals 40 patients) divided by Data Completeness Numerator (70 patients) minus Denominator Exception (b^2 equals 10 patients). All equals 40 patients divided by 60 patients. All equals 66.67 percent.

*See the posted measure specification for specific coding and instructions to submit this measure.

Note: Submission Frequency: Patient-Periodic

The measure diagrams were developed by CMS as a supplemental resource to be used in conjunction with the measure specifications. They should not be used alone or as a substitution for the measure specification.

Submission Criteria Three:

1. Start with Denominator
2. Check *Patients 50 years of age and older on the date of the encounter*:
 - a. If *Patients 50 years of age and older on the date of the encounter* equals No, do not include in *Eligible Population/Denominator*. Stop processing.
 - b. If *Patients 50 years of age and older on the date of the encounter* equals Yes, proceed to check *Patient encounter during the performance period as listed in Denominator**.
3. Check *Patient encounter during the performance period as listed in Denominator**:
 - a. If *Patient encounter during the performance period as listed in Denominator** equals No, do not include in *Eligible Population/Denominator*. Stop processing.
 - b. If *Patient encounter during the performance period as listed in Denominator** equals Yes, proceed to check *Active chemotherapy during the measurement period as listed in Denominator**.
4. Check *Active chemotherapy during the measurement period as listed in Denominator**:
 - a. If *Active chemotherapy during the measurement period as listed in Denominator** equals Yes, do not include in *Eligible Population/Denominator*. Stop processing.
 - b. If *Active chemotherapy during the measurement period as listed in Denominator** period equals No, proceed to check *Bone marrow transplant during the measurement period as listed in Denominator**.
5. Check *Bone marrow transplant during the measurement period as listed in Denominator**:
 - a. If *Bone marrow transplant during the measurement period as listed in Denominator** equals Yes, do not include in *Eligible Population/Denominator*. Stop processing.
 - b. If *Bone marrow transplant during the measurement period as listed in Denominator** equals No, proceed to check *History of immunocompromising conditions, cochlear implants, anatomic or functional asplenia, sickle cell anemia & Hemoglobin (HB)-S disease or cerebrospinal fluid leaks any time during the patient's history prior to or during the measurement period as listed in Denominator**.
6. Check *History of immunocompromising conditions, cochlear implants, anatomic or functional asplenia, sickle cell anemia & Hemoglobin (HB)-S disease or cerebrospinal fluid leaks any time during the patient's history prior to or during the measurement period as listed in Denominator**:

- a. If *History of immunocompromising conditions, cochlear implants, anatomic or functional asplenia, sickle cell anemia & Hemoglobin (HB)-S disease or cerebrospinal fluid leaks any time during the patient's history prior to or during the measurement period as listed in Denominator** equals Yes, do not include in *Eligible Population/Denominator*. Stop processing.
 - b. If *History of immunocompromising conditions, cochlear implants, anatomic or functional asplenia, sickle cell anemia & Hemoglobin (HB)-S disease or cerebrospinal fluid leaks any time during the patient's history prior to or during the measurement period as listed in Denominator** equals No, proceed to check *In hospice or using hospice services during the measurement period*.
7. Check *In hospice or using hospice services during the measurement period*:
- a. If *In hospice or using hospice services during the measurement period* equals Yes, do not include in *Eligible Population/Denominator*. Stop processing.
 - b. If *In hospice or using hospice services during the measurement period* equals No, include in *Eligible Population/Denominator*.
8. Denominator Population:
- a. Denominator Population is all Eligible Patients in the Denominator. Denominator is represented as Denominator in the Sample Calculation listed at the end of this document. Letter d³ equals 80 patients in the Sample Calculation.
9. Start Numerator
10. Check *Patient received at least one dose of the herpes zoster live vaccine or two doses of the herpes zoster recombinant vaccine (at least 28 days apart) anytime on or after the Patient's 50th birthday before or during the measurement period*:
- a. If *Patient received at least one dose of the herpes zoster live vaccine or two doses of the herpes zoster recombinant vaccine (at least 28 days apart) anytime on or after the Patient's 50th birthday before or during the measurement period* equals Yes, include in *Data Completeness Met and Performance Met*.
 - *Data Completeness Met and Performance Met* is represented as Data Completeness and Performance Rate in the Sample Calculation listed at the end of this document. Letter a³ equals 40 patients in Sample Calculation.
 - b. If *Patient received at least one dose of the herpes zoster live vaccine or two doses of the herpes zoster recombinant vaccine (at least 28 days apart) anytime on or after the Patient's 50th birthday before or during the measurement period* equals No, proceed to check *Documentation of medical reason(s) for not administering zoster vaccine (e.g., prior anaphylaxis due to the zoster vaccine)*.
11. Check *Documentation of medical reason(s) for not administering zoster vaccine (e.g., prior anaphylaxis due to the zoster vaccine)*:
- a. If *Documentation of medical reason(s) for not administering zoster vaccine (e.g., prior anaphylaxis due to the zoster vaccine)* equals Yes, include in *Data Completeness Met and Denominator Exception*.
 - *Data Completeness Met and Denominator Exception* is represented as Data Completeness and Performance Rate in the Sample Calculation listed at the end of this document. Letter b³ equals 10 patients in the Sample Calculation.

- b. If *Documentation of medical reason(s) for not administering zoster vaccine (e.g., prior anaphylaxis due to the zoster vaccine)* equals No, proceed to check *Patient did not receive at least one dose of the herpes zoster live vaccine or two doses of the herpes zoster recombinant vaccine (at least 28 days apart) anytime on or after the patient's 50th birthday before or during the measurement period.*
12. Check *Patient did not receive at least one dose of the herpes zoster live vaccine or two doses of the herpes zoster recombinant vaccine (at least 28 days apart) anytime on or after the patient's 50th birthday before or during the measurement period:*
 - a. If *Patient did not receive at least one dose of the herpes zoster live vaccine or two doses of the herpes zoster recombinant vaccine (at least 28 days apart) anytime on or after the patient's 50th birthday before or during the measurement period* equals Yes, include in *Data Completeness Met and Performance Not Met.*
 - *Data Completeness Met and Performance Not Met* is represented as Data Completeness in the Sample Calculation listed at the end of this document. Letter c³ equals 20 patients in the Sample Calculation.
 - b. If *Patient did not receive at least one dose of the herpes zoster live vaccine or two doses of the herpes zoster recombinant vaccine (at least 28 days apart) anytime on or after the patient's 50th birthday before or during the measurement period* equals No, proceed to check *Data Completeness Not Met.*
13. Check *Data Completeness Not Met:*
 - If *Data Completeness Not Met*, the Quality Data Code or equivalent was not submitted. 10 patients have been subtracted from the Data Completeness Numerator in the Sample Calculation.

Sample Calculations: Submission Criteria Three

Data Completeness equals Performance Met (a³ equals 40 patients) plus Denominator Exception (b³ equals 10 patients) plus Performance Not Met (c³ equals 20 patients) divided by Eligible Population/Denominator (d³ equals 80 patients). All equals 70 patients divided by 80 patients. All equals 87.50 percent.

Performance Rate equals Performance Met (a³ equals 40 patients) divided by Data Completeness Numerator (70 patients) minus Denominator Exception (b³ equals 10 patients). All equals 40 patients divided by 60 patients. All equals 66.67 percent.

*See the posted measure specification for specific coding and instructions to submit this measure.

Note: Submission Frequency: Patient-Periodic

The measure diagrams were developed by CMS as a supplemental resource to be used in conjunction with the measure specifications. They should not be used alone or as a substitution for the measure specification.

Submission Criteria Four:

1. Start with Denominator
2. Check *Patients 66 years of age and older on the date of the encounter:*
 - a. If *Patients 66 years of age and older on the date of the encounter* equals No, do not include in *Eligible Population/Denominator*. Stop processing.

- b. If *Patients 66 years of age and older on the date of the encounter* equals Yes, proceed to check *Patient encounter during the performance period as listed in Denominator**.
- 3. Check *Patient encounter during the performance period as listed in Denominator**:
 - a. If *Patient encounter during the performance period as listed in Denominator** equals No, do not include in *Eligible Population/Denominator*. Stop processing.
 - b. If *Patient encounter during the performance period as listed in Denominator** equals Yes, proceed to check *Active chemotherapy during the measurement period as listed in Denominator**.
- 4. Check *Active chemotherapy during the measurement period as listed in Denominator**:
 - a. If *Active chemotherapy during the measurement period as listed in Denominator** equals Yes, do not include in *Eligible Population/Denominator*. Stop processing.
 - b. If *Active chemotherapy during the measurement period as listed in Denominator** equals No, proceed to check *Bone marrow transplant during the measurement period as listed in Denominator**.
- 5. Check *Bone marrow transplant during the measurement period as listed in Denominator**:
 - a. If *Bone marrow transplant during the measurement period as listed in Denominator** equals Yes, do not include in *Eligible Population/Denominator*. Stop processing.
 - b. If *Bone marrow transplant during the measurement period as listed in Denominator** equals No, proceed to check *History of immunocompromising conditions, cochlear implants, anatomic or functional asplenia, sickle cell anemia & Hemoglobin (HB)-S disease or cerebrospinal fluid leaks any time during the patient's history prior to or during the measurement period as listed in Denominator**.
- 6. Check *History of immunocompromising conditions, cochlear implants, anatomic or functional asplenia, sickle cell anemia & Hemoglobin (HB)-S disease or cerebrospinal fluid leaks any time during the patient's history prior to or during the measurement period as listed in Denominator**:
 - a. If *History of immunocompromising conditions, cochlear implants, anatomic or functional asplenia, sickle cell anemia & Hemoglobin (HB)-S disease or cerebrospinal fluid leaks any time during the patient's history prior to or during the measurement period as listed in Denominator** equals Yes, do not include in *Eligible Population/Denominator*. Stop processing.
 - b. If *History of immunocompromising conditions, cochlear implants, anatomic or functional asplenia, sickle cell anemia & Hemoglobin (HB)-S disease or cerebrospinal fluid leaks any time during the patient's history prior to or during the measurement period as listed in Denominator** equals No, proceed to check *In hospice or using hospice services during the measurement period*.
- 7. Check *In hospice or using hospice services during the measurement period*:
 - a. If *In hospice or using hospice services during the measurement period* equals Yes, do not include in *Eligible Population/Denominator*. Stop processing.
 - b. If *In hospice or using hospice services during the measurement period* equals No, include in *Eligible Population/Denominator*.

8. Denominator Population:

- Denominator Population is all Eligible Patients in the Denominator. Denominator is represented as Denominator in the Sample Calculation listed at the end of this document. Letter d⁴ equals 80 patients in the Sample Calculation.
9. Start Numerator
10. Check *Patient received any pneumococcal conjugate or polysaccharide vaccine on or after their 60th birthday and before the end of the measurement period:*
- a. If *Patient received any pneumococcal conjugate or polysaccharide vaccine on or after their 60th birthday and before the end of the measurement period* equals Yes, include in *Data Completeness Met and Performance Met*.
 - *Data Completeness Met and Performance Met* is represented as Data Completeness and Performance Rate in the Sample Calculation listed at the end of this document. Letter a⁴ equals 40 patients in Sample Calculation.
 - b. If *Patient received any pneumococcal conjugate or polysaccharide vaccine on or after their 60th birthday and before the end of the measurement period* equals No, proceed to check *Documentation of medical reason(s) for not administering pneumococcal vaccine (e.g., prior anaphylaxis due to the pneumococcal vaccine)*.
11. Check *Documentation of medical reason(s) for not administering pneumococcal vaccine (e.g., prior anaphylaxis due to the pneumococcal vaccine):*
- a. If *Documentation of medical reason(s) for not administering pneumococcal vaccine (e.g., prior anaphylaxis due to the pneumococcal vaccine)* equals Yes, include in *Data Completeness Met and Denominator Exception*.
 - *Data Completeness Met and Denominator Exception* is represented as Data Completeness and Performance Rate in the Sample Calculation listed at the end of this document. Letter b⁴ equals 10 patients in the Sample Calculation.
 - b. If *Documentation of medical reason(s) for not administering pneumococcal vaccine (e.g., prior anaphylaxis due to the pneumococcal vaccine)* equals No, proceed to check *Patient did not receive any pneumococcal conjugate or polysaccharide vaccine on or after their 60th birthday and before or during measurement period*.
12. Check *Patient did not receive any pneumococcal conjugate or polysaccharide vaccine on or after their 60th birthday and before or during measurement period:*
- a. If *Patient did not receive any pneumococcal conjugate or polysaccharide vaccine on or after their 60th birthday and before or during measurement period* equals Yes, include in *Data Completeness Met and Performance Not Met*.
 - *Data Completeness Met and Performance Not Met* is represented as Data Completeness in the Sample Calculation listed at the end of this document. Letter c⁴ equals 20 patients in the Sample Calculation.
 - b. If *Patient did not receive any pneumococcal conjugate or polysaccharide vaccine on or after their 60th birthday and before or during measurement period* equals No, proceed to check *Data Completeness Not Met*.
13. Check *Data Completeness Not Met:*

- If *Data Completeness Not Met*, the Quality Data Code or equivalent was not submitted. 10 patients have been subtracted from the Data Completeness Numerator in the Sample Calculation.

Sample Calculations: Submission Criteria Four

Data Completeness equals Performance Met (a⁴ equals 40 patients) plus Denominator Exception (b⁴ equals 10 patients) plus Performance Not Met (c⁴ equals 20 patients) divided by Eligible Population/Denominator (d⁴ equals 80 patients). All equals 70 patients divided by 80 patients. All equals 87.50 percent.

Performance Rate equals Performance Met (a⁴ equals 40 patients) divided by Data Completeness Numerator (70 patients) minus Denominator Exception (b⁴ equals 10 patients). All equals 40 patients divided by 60 patients. All equals 66.67 percent.

*See the posted measure specification for specific coding and instructions to submit this measure.

Note: Submission Frequency: Patient-Periodic

The measure diagrams were developed by CMS as a supplemental resource to be used in conjunction with the measure specifications. They should not be used alone or as a substitution for the measure specification.