

Quality ID #117 (CBE 0055): Diabetes: Eye Exam

2025 COLLECTION TYPE: MIPS CLINICAL QUALITY MEASURES (CQMS)

MEASURE TYPE: Process

DESCRIPTION:
Percentage of patients 18-75 years of age with diabetes and an active diagnosis of retinopathy in any part of the measurement period who had a retinal or dilated eye exam during the measurement period or diabetics with no diagnosis of retinopathy in any part of the measurement period who had a retinal or dilated eye exam during the measurement period or in the 12 months prior to the measurement period.

INSTRUCTIONS:
This measure is to be submitted a minimum of **once per performance period** for patients with diabetes mellitus seen during the performance period. This measure may be submitted by Merit-based Incentive Payment System (MIPS) eligible clinicians who perform the quality actions described in the measure based on services provided and the measure-specific denominator coding.

NOTE: Patient encounters for this measure conducted via telehealth (including but not limited to encounters coded with GQ, GT, POS 02, POS 10) are allowable. Please note that effective January 1, 2025, while a measure may be denoted as telehealth eligible, specific denominator codes within the encounter may no longer be eligible due to changes outlined in the CY 2024 PFS Final Rule List of Medicare Telehealth Services.

Measure Submission Type:
Measure data may be submitted by individual MIPS eligible clinicians, groups, or third-party intermediaries. The listed denominator criteria are used to identify the intended patient population. The numerator options included in this specification are used to submit the quality actions as allowed by the measure. The quality data codes listed do not need to be submitted by MIPS eligible clinicians, groups, or third-party intermediaries that utilize this modality for submissions; however, these codes may be submitted for those third-party intermediaries that utilize Medicare Part B claims data. For more information regarding Application Programming Interface (API), please refer to the Quality Payment Program (QPP) website.

DENOMINATOR:
Patients 18 - 75 years of age with diabetes with a visit during the measurement period

DENOMINATOR NOTE: To assess the age for exclusions, the patient's age on the date of the encounter should be used.

**Signifies that this CPT Category I code is a non-covered service under the Medicare Part B Physician Fee Schedule (PFS). These non-covered services should be counted in the denominator population for MIPS CQMs.*

Denominator Criteria (Eligible Cases):

Patients 18 to 75 years of age on date of encounter

AND

Diagnosis for diabetes (ICD-10-CM): E10.A0, E10.A1, E10.A2, E10.10, E10.11, E10.21, E10.22, E10.29, E10.311, E10.319, E10.3211, E10.3212, E10.3213, E10.3219, E10.3291, E10.3292, E10.3293, E10.3299, E10.3311, E10.3312, E10.3313, E10.3319, E10.3391, E10.3392, E10.3393, E10.3399, E10.3411, E10.3412, E10.3413, E10.3419, E10.3491, E10.3492, E10.3493, E10.3499, E10.3511, E10.3512, E10.3513, E10.3519,

E10.3521, E10.3522, E10.3523, E10.3529, E10.3531, E10.3532, E10.3533, E10.3539, E10.3541, E10.3542, E10.3543, E10.3549, E10.3551, E10.3552, E10.3553, E10.3559, E10.3591, E10.3592, E10.3593, E10.3599, E10.36, E10.37X1, E10.37X2, E10.37X3, E10.37X9, E10.39, E10.40, E10.41, E10.42, E10.43, E10.44, E10.49, E10.51, E10.52, E10.59, E10.610, E10.618, E10.620, E10.621, E10.622, E10.628, E10.630, E10.638, E10.641, E10.649, E10.65, E10.69, E10.8, E10.9, E11.00, E11.01, E11.21, E11.22, E11.29, E11.311, E11.319, E11.3211, E11.3212, E11.3213, E11.3219, E11.3291, E11.3292, E11.3293, E11.3299, E11.3311, E11.3312, E11.3313, E11.3319, E11.3391, E11.3392, E11.3393, E11.3399, E11.3411, E11.3412, E11.3413, E11.3419, E11.3491, E11.3492, E11.3493, E11.3499, E11.3511, E11.3512, E11.3513, E11.3519, E11.3521, E11.3522, E11.3523, E11.3529, E11.3531, E11.3532, E11.3533, E11.3539, E11.3541, E11.3542, E11.3543, E11.3549, E11.3551, E11.3552, E11.3553, E11.3559, E11.3591, E11.3592, E11.3593, E11.3599, E11.36, E11.37X1, E11.37X2, E11.37X3, E11.37X9, E11.39, E11.40, E11.41, E11.42, E11.43, E11.44, E11.49, E11.51, E11.52, E11.59, E11.610, E11.618, E11.620, E11.621, E11.622, E11.628, E11.630, E11.638, E11.641, E11.649, E11.65, E11.69, E11.8, E11.9, E13.00, E13.01, E13.10, E13.11, E13.21, E13.22, E13.29, E13.311, E13.319, E13.3211, E13.3212, E13.3213, E13.3219, E13.3291, E13.3292, E13.3293, E13.3299, E13.3311, E13.3312, E13.3313, E13.3319, E13.3391, E13.3392, E13.3393, E13.3399, E13.3411, E13.3412, E13.3413, E13.3419, E13.3491, E13.3492, E13.3493, E13.3499, E13.3511, E13.3512, E13.3513, E13.3519, E13.3521, E13.3522, E13.3523, E13.3529, E13.3531, E13.3532, E13.3533, E13.3539, E13.3541, E13.3542, E13.3543, E13.3549, E13.3551, E13.3552, E13.3553, E13.3559, E13.3591, E13.3592, E13.3593, E13.3599, E13.36, E13.37X1, E13.37X2, E13.37X3, E13.37X9, E13.39, E13.40, E13.41, E13.42, E13.43, E13.44, E13.49, E13.51, E13.52, E13.59, E13.610, E13.618, E13.620, E13.621, E13.622, E13.628, E13.630, E13.638, E13.641, E13.649, E13.65, E13.69, E13.8, E13.9, O24.011, O24.012, O24.013, O24.019, O24.02, O24.03, O24.111, O24.112, O24.113, O24.119, O24.12, O24.13, O24.311, O24.312, O24.313, O24.319, O24.32, O24.33, O24.811, O24.812, O24.813, O24.819, O24.82, O24.83

AND

Patient encounter during the performance period (CPT or HCPCS): 92002, 92004, 92012, 92014, 98000, 98001, 98002, 98003, 98004, 98005, 98006, 98007, 98008, 98009, 98010, 98011, 98012, 98013, 98014, 98015, 98016, 99202, 99203, 99204, 99205, 99212, 99213, 99214, 99215, 99341, 99342, 99344, 99345, 99347, 99348, 99349, 99350, 99385*, 99386*, 99387*, 99395*, 99396*, 99397*, G0402, G0438, G0439

AND NOT

DENOMINATOR EXCLUSIONS:

Patient is using hospice services any time during the measurement period: G9714

OR

Patient is using palliative care services any time during the measurement period: G9994

OR

Patient age 66 or older in Institutional Special Needs Plans (SNP) or residing in long-term care with POS code 32, 33, 34, 54, or 56 for more than 90 consecutive days during the measurement period: G2105

OR

Patients 66 years of age and older with at least one claim/encounter for frailty during the measurement period AND a dispensed medication for dementia during the measurement period or the year prior to the measurement period: G2106

OR

Patients 66 years of age and older with at least one claim/encounter for frailty during the measurement period AND an advanced illness diagnosis during the measurement period or the year prior to the measurement period: G2107

Table: Dementia Exclusion Medications

Description	Prescription
Cholinesterase inhibitors	Donepezil Galantamine Rivastigimine
Miscellaneous central nervous system agents	Memantine
Dementia combinations	Donepezil-memantine

- **Codes to identify Frailty:** 99504, 99509, E0100, E0105, E0130, E0135, E0140, E0141, E0143, E0144, E0147, E0148, E0149, E0163, E0165, E0167, E0168, E0170, E0171, E0250, E0251, E0255, E0256, E0260, E0261, E0265, E0266, E0270, E0290, E0291, E0292, E0293, E0294, E0295, E0296, E0297, E0301, E0302, E0303, E0304, E0424, E0425, E0430, E0431, E0433, E0434, E0435, E0439, E0440, E0441, E0442, E0443, E0444, E0462, E0465, E0466, E0470, E0471, E0472, E0561, E0562, E1130, E1140, E1150, E1160, E1161, E1240, E1250, E1260, E1270, E1280, E1285, E1290, E1295, E1296, E1297, E1298, G0162, G0299, G0300, G0493, G0494, S0271, S0311, S9123, S9124, T1000, T1001, T1002, T1003, T1004, T1005, T1019, T1020, T1021, T1022, T1030, T1031, L89.000, L89.001, L89.002, L89.003, L89.004, L89.006, L89.009, L89.010, L89.011, L89.012, L89.013, L89.014, L89.016, L89.019, L89.020, L89.021, L89.022, L89.023, L89.024, L89.026, L89.029, L89.100, L89.101, L89.102, L89.103, L89.104, L89.106, L89.109, L89.110, L89.111, L89.112, L89.113, L89.114, L89.116, L89.119, L89.120, L89.121, L89.122, L89.123, L89.124, L89.126, L89.129, L89.130, L89.131, L89.132, L89.133, L89.134, L89.136, L89.139, L89.140, L89.141, L89.142, L89.143, L89.144, L89.146, L89.149, L89.150, L89.151, L89.152, L89.153, L89.154, L89.156, L89.159, L89.200, L89.201, L89.202, L89.203, L89.204, L89.206, L89.209, L89.210, L89.211, L89.212, L89.213, L89.214, L89.216, L89.219, L89.220, L89.221, L89.222, L89.223, L89.224, L89.226, L89.229, L89.300, L89.301, L89.302, L89.303, L89.304, L89.306, L89.309, L89.310, L89.311, L89.312, L89.313, L89.314, L89.316, L89.319, L89.320, L89.321, L89.322, L89.323, L89.324, L89.326, L89.329, L89.40, L89.41, L89.42, L89.43, L89.44, L89.45, L89.46, L89.500, L89.501, L89.502, L89.503, L89.504, L89.506, L89.509, L89.510, L89.511, L89.512, L89.513, L89.514, L89.516, L89.519, L89.520, L89.521, L89.522, L89.523, L89.524, L89.526, L89.529, L89.600, L89.601, L89.602, L89.603, L89.604, L89.606, L89.609, L89.610, L89.611, L89.612, L89.613, L89.614, L89.616, L89.619, L89.620, L89.621, L89.622, L89.623, L89.624, L89.626, L89.629, L89.810, L89.811, L89.812, L89.813, L89.814, L89.816, L89.819, L89.890, L89.891, L89.892, L89.893, L89.894, L89.896, L89.899, L89.90, L89.91, L89.92, L89.93, L89.94, L89.95, L89.96, M62.50, M62.81, M62.84, R26.2, R26.89, R26.9, R53.1, R53.81, R54, R62.7, R63.4, R63.6, R64, W01.0XXA, W01.0XXD, W01.0XXS, W01.10XA, W01.10XD, W01.10XS, W01.110A, W01.110D, W01.110S, W01.111A, W01.111D, W01.111S, W01.118A, W01.118D, W01.118S, W01.119A, W01.119D, W01.119S, W01.190A, W01.190D, W01.190S, W01.198A, W01.198D, W01.198S, W06.XXXA, W06.XXXD, W06.XXXS, W07.XXXA, W07.XXXD, W07.XXXS, W08.XXXA, W08.XXXD, W08.XXXS, W10.0XXA, W10.0XXD, W10.0XXS, W10.1XXA, W10.1XXD, W10.1XXS, W10.2XXA, W10.2XXD, W10.2XXS, W10.8XXA, W10.8XXD, W10.8XXS, W10.9XXA, W10.9XXD, W10.9XXS, W18.00XA, W18.00XD, W18.00XS, W18.02XA, W18.02XD, W18.02XS, W18.09XA, W18.09XD, W18.09XS, W18.11XA, W18.11XD, W18.11XS, W18.12XA, W18.12XD, W18.12XS, W18.2XXA, W18.2XXD, W18.2XXS, W18.30XA, W18.30XD, W18.30XS, W18.31XA, W18.31XD, W18.31XS, W18.39XA, W18.39XD, W18.39XS, W19.XXXA, W19.XXXD, W19.XXXS, Y92.199, Z59.3, Z73.6, Z74.01, Z74.09, Z74.1, Z74.2, Z74.3, Z74.8, Z74.9, Z91.81, Z99.11, Z99.3, Z99.81, Z99.89
- **Codes to identify Advanced Illness:** A81.00, A81.01, A81.09, C25.0, C25.1, C25.2, C25.3, C25.4, C25.7, C25.8, C25.9, C71.0, C71.1, C71.2, C71.3, C71.4, C71.5, C71.6, C71.7, C71.8, C71.9, C77.0, C77.1, C77.2, C77.3, C77.4, C77.5, C77.8, C77.9, C78.00, C78.01, C78.02, C78.1, C78.2, C78.30, C78.39, C78.4, C78.5, C78.6, C78.7, C78.80, C78.89, C79.00, C79.01, C79.02, C79.10, C79.11, C79.19, C79.2, C79.31, C79.32, C79.40, C79.49, C79.51, C79.52, C79.60, C79.61, C79.62, C79.70, C79.71, C79.72, C79.81, C79.82

C79.89, C79.9, C91.00, C91.02, C92.00, C92.02, C93.00, C93.02, C93.90, C93.92, C93.Z0, C93.Z2, C94.30, C94.32, F01.50, F01.511, F01.518, F01.52, F01.53, F01.54, F01.A0, F01.A11, F01.A18, F01.A2, F01.A3, F01.A4, F01.B0, F01.B11, F01.B18, F01.B2, F01.B3, F01.B4, F01.C0, F01.C11, F01.C18, F01.C2, F01.C3, F01.C4, F02.80, F02.811, F02.818, F02.82, F02.83, F02.84, F02.A0, F02.A11, F02.A18, F02.A2, F02.A3, F02.A4, F02.B0, F02.B11, F02.B18, F02.B2, F02.B3, F02.B4, F02.C0, F02.C11, F02.C18, F02.C2, F02.C3, F02.C4, F03.90, F03.911, F03.918, F03.92, F03.93, F03.94, F03.A0, F03.A11, F03.A18, F03.A2, F03.A3, F03.A4, F03.B0, F03.B11, F03.B18, F03.B2, F03.B3, F03.B4, F03.C0, F03.C11, F03.C18, F03.C2, F03.C3, F03.C4, F04, F10.27, F10.96, F10.97, G10, G12.21, , G20.A1, G20.A2, G20.B1, G20.B2, G20.C, G30.0, G30.1, G30.8, G30.9, G31.01, G31.09, G31.83, G35, I09.81, I11.0, I12.0, I13.0, I13.11, I13.2, I50.1, I50.20, I50.21, I50.22, I50.23, I50.30, I50.31, I50.32, I50.33, I50.40, I50.41, I50.42, I50.43, I50.810, I50.811, I50.812, I50.813, I50.814, I50.82, I50.83, I50.84, I50.89, I50.9, J43.0, J43.1, J43.2, J43.8, J43.9, J68.4, J84.10, J84.112, J84.170, J84.178, J96.10, J96.11, J96.12, J96.20, J96.21, J96.22, J96.90, J96.91, J96.92, J98.2, J98.3, K70.10, K70.11, K70.2, K70.30, K70.31, K70.40, K70.41, K70.9, K74.00, K74.01, K74.02, K74.1, K74.2, K74.4, K74.5, K74.60, K74.69, N18.5, N18.6

NUMERATOR:

Patients with an eye screening for diabetic retinal disease. This includes diabetics who had one of the following:

- Diabetic with a diagnosis of retinopathy during the measurement period and a retinal or dilated eye exam by an eye care professional in the measurement period
- Diabetic with no diagnosis of retinopathy during the measurement period and a retinal or dilated eye exam by an eye care professional in the measurement period or the year prior to the measurement period

NUMERATOR NOTE: *The eye exam must be performed or reviewed by an ophthalmologist or optometrist, or there must be evidence that fundus photography results were read by a system that provides an artificial intelligence (AI) interpretation and documented as with or without retinopathy (reporting of CPT 92229 meets the intent of the quality action for performance met). Alternatively, results may be read by a qualified reading center that operates under the direction of a medical director who is a retinal specialist.*

Numerator Options:

Performance Met:

Dilated retinal eye exam with interpretation by an ophthalmologist or optometrist or artificial intelligence (AI) interpretation documented and reviewed; with evidence of retinopathy (M1220)

OR

Performance Met:

Dilated retinal eye exam with interpretation by an ophthalmologist or optometrist or artificial intelligence (AI) interpretation documented and reviewed; without evidence of retinopathy (M1221)

OR

Performance Met:

7 standard field stereoscopic retinal photos with interpretation by an ophthalmologist or optometrist documented and reviewed; with evidence of retinopathy (2024F)

OR

Performance Met:

7 standard field stereoscopic retinal photos with interpretation by an ophthalmologist or optometrist documented and reviewed; without evidence of retinopathy (2025F)

OR

Performance Met:

Eye imaging validated to match diagnosis from 7 standard field stereoscopic retinal photos results

documented and reviewed; with evidence of retinopathy (2026F)

OR

Performance Met:

Eye imaging validated to match diagnosis from 7 standard field stereoscopic retinal photos results documented and reviewed; without evidence of retinopathy (2033F)

OR

Performance Met:

Low risk for retinopathy (no evidence of retinopathy in the prior year) (3072F)

NOTE: *This code can only be used if the claim/encounter was during the measurement period because it indicates that the patient had "no evidence of retinopathy in the prior year". This code definition indicates results were negative; therefore, a result is not required.*

OR

Performance Not Met:

Dilated eye exam was not performed, reason not otherwise specified (2022F or 2024F or 2026F with 8P)

RATIONALE:

Diabetes is the seventh leading cause of death in the United States (Centers for Disease Control and Prevention [CDC], 2022a). In 2019, diabetes affected more than 37 million Americans (11.3 percent of the U.S. population) and killed more than 87,000 people (American Diabetes Association [ADA], 2022a). Diabetes is a long-lasting disease marked by high blood glucose levels, resulting from the body's inability to produce or use insulin properly (CDC, 2022a). People with diabetes are at increased risk of serious health complications including vision loss, heart disease, stroke, kidney damage, amputation of feet or legs, and premature death (CDC, 2022b).

In 2017, diabetes cost the U.S. an estimated \$327 billion: \$237 billion in direct medical costs and \$90 billion in reduced productivity. This is a 34 percent increase from the estimated \$245 billion spent on diabetes in 2012 (ADA, 2018).

Diabetic retinopathy is progressive damage to the small blood vessels in the retina that may result in loss of vision. It is the leading cause of blindness in adults between 20-74 years of age. Approximately 4.1 million adults are affected by diabetic retinopathy (CDC, 2020).

CLINICAL RECOMMENDATION STATEMENTS:

American Diabetes Association (2023):

- Adults with type 1 diabetes should have an initial dilated and comprehensive eye examination by an ophthalmologist or optometrist within 5 years after the onset of diabetes. (Level of evidence: B)
- Patients with type 2 diabetes should have an initial dilated and comprehensive eye examination by an ophthalmologist or optometrist at the time of the diabetes diagnosis. (Level of evidence: B)
- If there is no evidence of retinopathy for one or more annual eye exams and glycemia is well controlled, then screening every 1–2 years may be considered. If any level of diabetic retinopathy is present, subsequent dilated retinal examinations should be repeated at least annually by an ophthalmologist or optometrist. If retinopathy is progressing or sight threatening, then examinations will be required more frequently. (Level of evidence: B)

COPYRIGHT:

This Physician Performance Measure (Measure) and related data specifications are owned and were developed by the National Committee for Quality Assurance (NCQA). NCQA is not responsible for any use of the Measure. NCQA makes no representations, warranties, or endorsement about the quality of any organization or physician that uses or reports performance measures and NCQA has no liability to anyone who relies on such measures or specifications. NCQA holds a copyright in the Measure.

The Measure can be reproduced and distributed, without modification, for noncommercial purposes (e.g., use by healthcare providers in connection with their practices) without obtaining approval from NCOA. Commercial use is defined as the sale, licensing, or distribution of the Measure for commercial gain, or incorporation of the Measure into a product or service that is sold, licensed or distributed for commercial gain. All commercial uses or requests for modification must be approved by NCOA and are subject to a license at the discretion of NCOA. © 2012-2024 National Committee for Quality Assurance. All Rights Reserved.

The performance Measure is not a clinical guideline and does not establish a standard of medical care, and has not been tested for all potential applications.

THE MEASURES AND SPECIFICATIONS ARE PROVIDED "AS IS" WITHOUT WARRANTY OF ANY KIND.

Limited proprietary coding is contained in the Measure specifications for user convenience. Users of proprietary code sets should obtain all necessary licenses from the owners of the code sets. NCOA disclaims all liability for use or accuracy of any third-party codes contained in the specifications.

CPT® codes, descriptions and other data are copyright 2024. American Medical Association. All rights reserved. CPT is a trademark of the American Medical Association. Fee schedules, relative value units, conversion factors and/or related components are not assigned by the AMA, are not part of CPT, and the AMA is not recommending their use. The AMA does not directly or indirectly practice medicine or dispense medical services. The AMA assumes no liability for data contained or not contained herein. Applicable FARS/DFARS restrictions apply to government use.

Some measure specifications contain coding from LOINC® (<http://loinc.org>). The LOINC table, LOINC codes, LOINC panels and form file, LOINC linguistic variants file, LOINC/RSNA Radiology Playbook, and LOINC/IEEE Medical Device Code Mapping Table are copyright 2004-2024 Regenstrief Institute, Inc. and the Logical Observation Identifiers Names and Codes (LOINC) Committee, and are available at no cost under the license at <http://loinc.org/terms-of-use>.

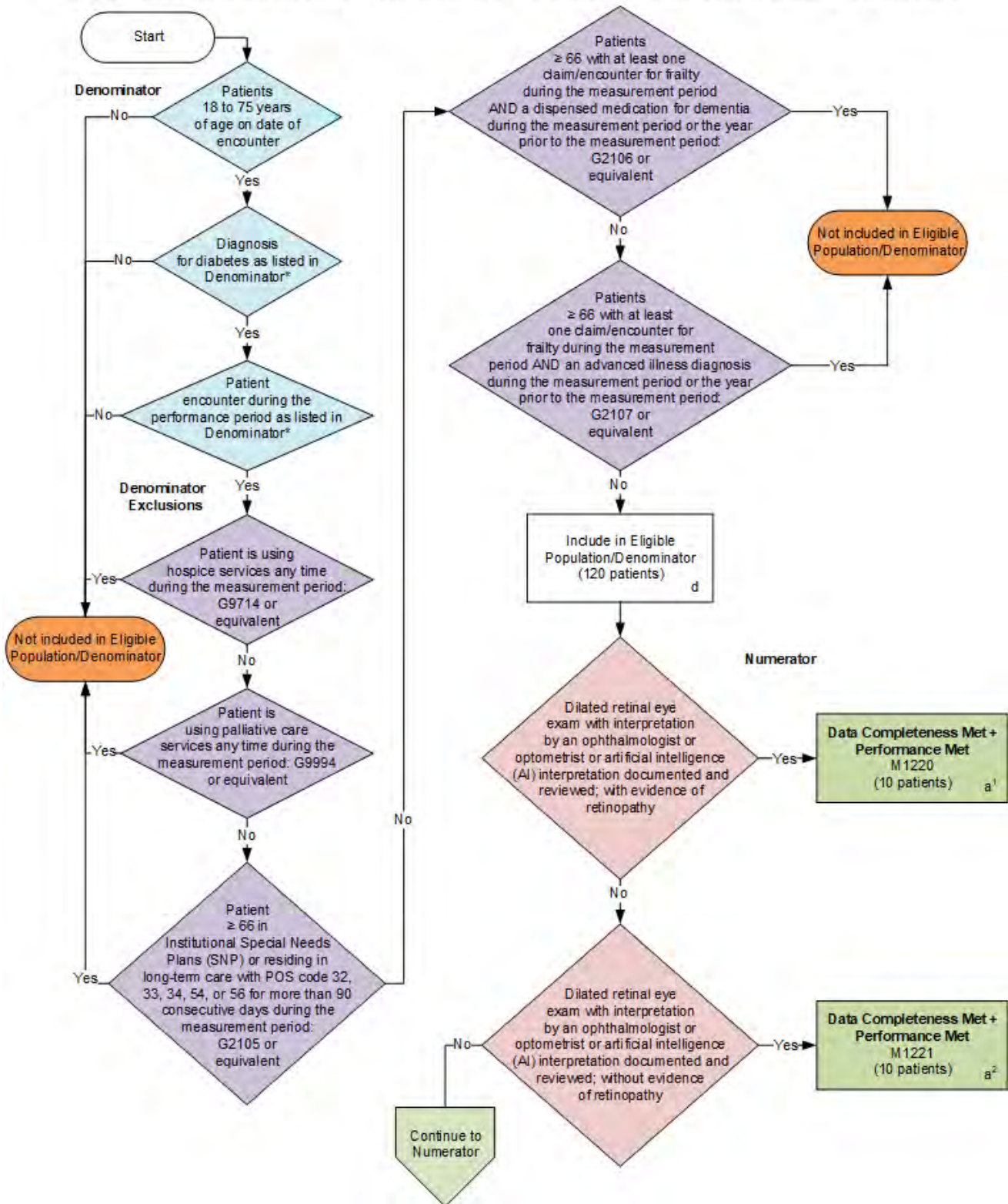
This material contains SNOMED Clinical Terms® (SNOMED CT[®]) copyright 2004-2024 International Health Terminology Standards Development Organisation.

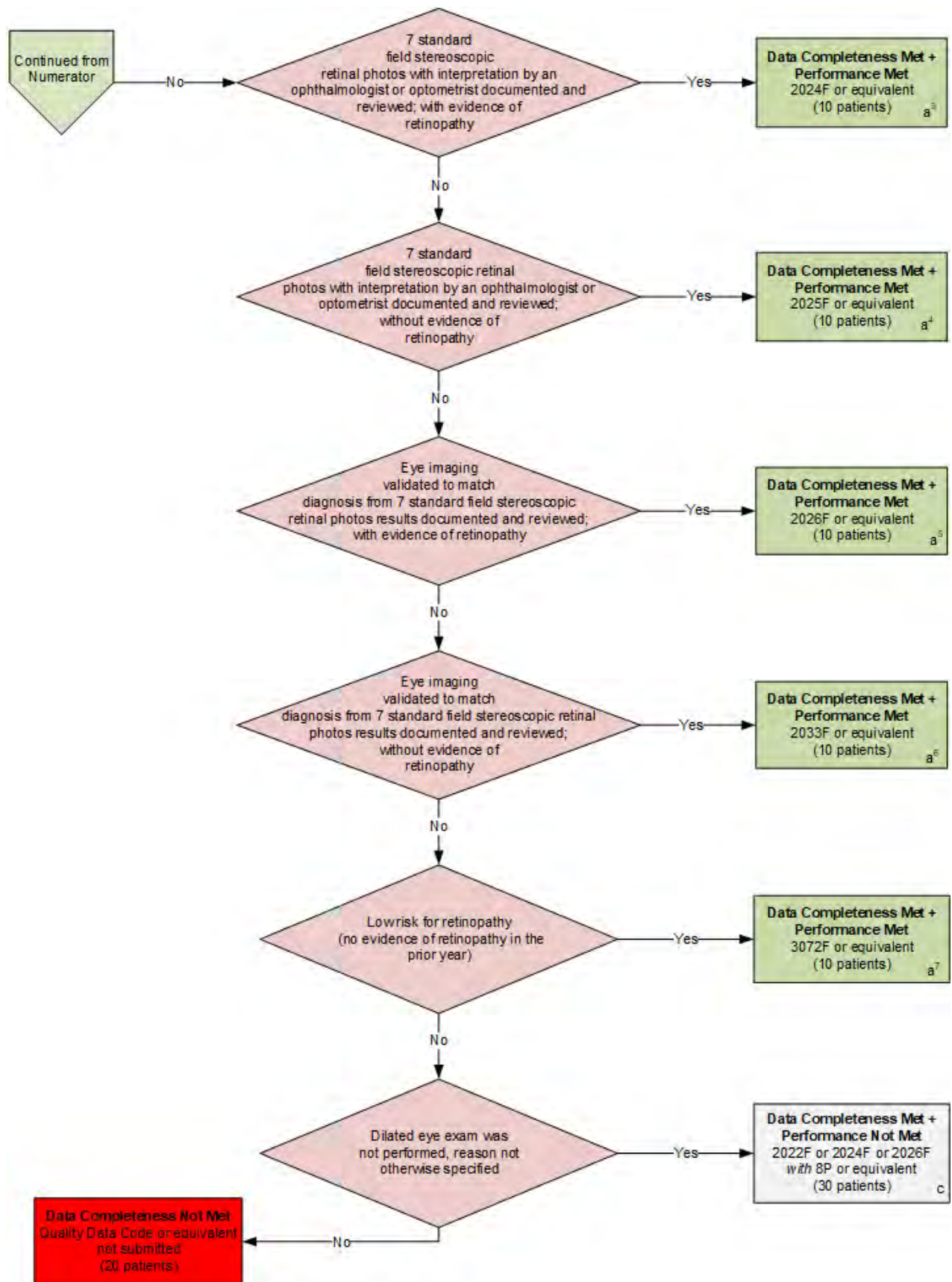
ICD-10 copyright 2024 World Health Organization. All Rights Reserved.

Some measures use RxNorm, a standardized nomenclature and coding for clinical drugs and drug delivery devices, which is made publicly available courtesy of the U.S. National Library of Medicine (NLM), National Institutes of Health, Department of Health and Human Services. NLM is not responsible for the measures and does not endorse or recommend this or any other product.

2025 Clinical Quality Measure Flow for Quality ID #117 (CBE 0055): Diabetes: Eye Exam

Disclaimer: Refer to the measure specification for specific coding and instructions to submit this measure.





SAMPLE CALCULATIONS

Data Completeness=

$$\frac{\text{Performance Met (a}^1+\text{a}^2+\text{a}^3+\text{a}^4+\text{a}^5+\text{a}^6+\text{a}^7=70 \text{ patients}) + \text{Performance Not Met (c=30 patients)}}{\text{Eligible Population / Denominator (d= 120 patients)}} = \frac{100 \text{ patients}}{120 \text{ patients}} = 83.33\%$$

Performance Rate=

$$\frac{\text{Performance Met (a}^1+\text{a}^2+\text{a}^3+\text{a}^4+\text{a}^5+\text{a}^6+\text{a}^7=70 \text{ patients})}{\text{Data Completeness Numerator (100 patients)}} = \frac{70 \text{ patients}}{100 \text{ patients}} = 70.00\%$$

*See the posted measure specification for specific coding and instructions to submit this measure.

NOTE: Submission Frequency: Patient-Process

CPT only copyright 2024 American Medical Association. All rights reserved.
The measure diagrams were developed by CMS as a supplemental resource to be used in conjunction with the measure specifications. They should not be used alone or as a substitution for the measure specification. v9

**2025 Clinical Quality Measure Flow Narrative for Quality ID #117 (CBE 0055):
Diabetes: Eye Exam**

Disclaimer: Refer to the measure specification for specific coding and instructions to submit this measure.

1. Start with Denominator
2. Check *Patients 18 to 75 years of age on date of encounter*:
 - a. If *Patients 18 to 75 years of age on date of encounter* equals No, do not include in *Eligible Population/Denominator*. Stop processing.
 - b. If *Patients 18 to 75 years of age on date of encounter* equals Yes, proceed to check *Diagnosis for diabetes as listed in Denominator**.
3. Check *Diagnosis for diabetes as listed in Denominator**:
 - a. If *Diagnosis for diabetes as listed in Denominator** equals No, do not include in *Eligible Population/Denominator*. Stop processing.
 - b. If *Diagnosis for diabetes as listed in Denominator** equals Yes, proceed to check *Patient encounter during the performance period as listed in Denominator**.
4. Check *Patient encounter during the performance period as listed in Denominator**:
 - a. If *Patient encounter during the performance period as listed in Denominator** equals No, do not include in *Eligible Population/Denominator*. Stop processing.
 - b. If *Patient encounter during the performance period as listed in Denominator** equals Yes, proceed to check *Patient is using hospice services any time during the measurement period*.
5. Check *Patient is using hospice services any time during the measurement period*:
 - a. If *Patient is using hospice services any time during the measurement period* equals Yes, do not include in *Eligible Population/Denominator*. Stop processing
 - b. If *Patient is using hospice services any time during the measurement period* equals No, proceed to check *Patient is using palliative care services any time during the measurement period*.
6. Check *Patient is using palliative care services any time during the measurement period*:
 - a. If *Patient is using palliative care services any time during the measurement period* equals Yes, do not include in *Eligible Population/Denominator*. Stop processing
 - b. If *Patient is using palliative care services any time during the measurement period* equals No, proceed to check *Patient age 66 or older in Institutional Special Needs Plans (SNP) or residing in long-term care with POS code 32, 33, 34, 54, or 56 for more than 90 consecutive days during the measurement period*.
7. Check *Patient age 66 or older in Institutional Special Needs Plans (SNP) or residing in long-term care with POS code 32, 33, 34, 54, or 56 for more than 90 consecutive days during the measurement period*:
 - a. If *Patient age 66 or older in Institutional Special Needs Plans (SNP) or residing in long-term care with POS code 32, 33, 34, 54, or 56 for more than 90 consecutive days during the measurement period* equals Yes, do not include in *Eligible Population/Denominator*. Stop processing.

- b. If *Patient age 66 or older in Institutional Special Needs Plans (SNP) or residing in long-term care with POS code 32, 33, 34, 54, or 56 for more than 90 consecutive days during the measurement period* equals No, proceed to check *Patients 66 years of age and older with at least one claim/encounter for frailty during the measurement period AND a dispensed medication for dementia during the measurement period or the year prior to the measurement period*.
8. Check *Patients 66 years of age and older with at least one claim/encounter for frailty during the measurement period AND a dispensed medication for dementia during the measurement period or the year prior to the measurement period*:
 - a. If *Patients 66 years of age and older with at least one claim/encounter for frailty during the measurement period AND a dispensed medication for dementia during the measurement period or the year prior to the measurement period* equals Yes, do not include in *Eligible Population/Denominator*. Stop processing.
 - b. If *Patients 66 years of age and older with at least one claim/encounter for frailty during the measurement period AND a dispensed medication for dementia during the measurement period or the year prior to the measurement period* equals No, proceed to check *Patients 66 years of age and older with at least one claim/encounter for frailty during the measurement period AND an advanced illness diagnosis during the measurement period or the year prior to the measurement period*.
9. Check *Patients 66 years of age and older with at least one claim/encounter for frailty during the measurement period AND advanced illness diagnosis during the measurement period or the year prior to the measurement period*:
 - a. If *Patients 66 years of age and older with at least one claim/encounter for frailty during the measurement period AND an advanced illness diagnosis during the measurement period or the year prior to the measurement period* equals Yes, do not include in *Eligible Population/Denominator*. Stop processing.
 - b. If *Patients 66 years of age and older with at least one claim/encounter for frailty during the measurement period AND an advanced illness diagnosis during the measurement period or the year prior to the measurement period* equals No, include in *Eligible Population/Denominator*.
10. Denominator Population:
 - Denominator Population is all Eligible Patients in the Denominator. Denominator is represented as Denominator in the Sample Calculation listed at the end of this document. Letter d equals 120 patients in the Sample Calculation.
11. Start Numerator
12. Check *Dilated retinal eye exam with interpretation by an ophthalmologist or optometrist or artificial intelligence (AI) interpretation documented and reviewed; with evidence of retinopathy*:
 - a. If *Dilated retinal eye exam with interpretation by an ophthalmologist or optometrist or artificial intelligence (AI) interpretation documented and reviewed; with evidence of retinopathy* equals Yes, include in *Data Completeness Met and Performance Met*.
 - *Data Completeness Met and Performance Met* letter is represented as Data Completeness and Performance Rate in the Sample Calculation listed at the end of this document. Letter a¹ equals 10 patients in the Sample Calculation.

- b. If *Dilated retinal eye exam with interpretation by an ophthalmologist or optometrist or artificial intelligence (AI) interpretation documented and reviewed; with evidence of retinopathy* equals No, proceed to check *Dilated retinal eye exam with interpretation by an ophthalmologist or optometrist or artificial intelligence (AI) interpretation documented and reviewed; without evidence of retinopathy*.
13. Check *Dilated retinal eye exam with interpretation by an ophthalmologist or optometrist or artificial intelligence (AI) interpretation documented and reviewed; without evidence of retinopathy*.
- a. If *Dilated retinal eye exam with interpretation by an ophthalmologist or optometrist or artificial intelligence (AI) interpretation documented and reviewed; without evidence of retinopathy* equals Yes, include in *Data Completeness Met and Performance Met*.
 - *Data Completeness Met and Performance Met* letter is represented as Data Completeness and Performance Rate in the Sample Calculation listed at the end of this document. Letter a² equals 10 patients in the Sample Calculation.
 - b. If *Dilated retinal eye exam with interpretation by an ophthalmologist or optometrist or artificial intelligence (AI) interpretation documented and reviewed; without evidence of retinopathy* equals No, proceed to check *7 standard field stereoscopic retinal photos with interpretation by an ophthalmologist or optometrist documented and reviewed; with evidence of retinopathy*.
14. Check *7 standard field stereoscopic retinal photos with interpretation by an ophthalmologist or optometrist documented and reviewed; with evidence of retinopathy*.
- a. If *7 standard field stereoscopic retinal photos with interpretation by an ophthalmologist or optometrist documented and reviewed; with evidence of retinopathy* equals Yes, include in *Data Completeness Met and Performance Met*.
 - *Data Completeness Met and Performance Met* letter is represented as Data Completeness and Performance Rate in the Sample Calculation listed at the end of this document. Letter a³ equals 10 patients in the Sample Calculation.
 - b. If *7 standard field stereoscopic retinal photos with interpretation by an ophthalmologist or optometrist documented and reviewed; with evidence of retinopathy* equals No, proceed to check *7 standard field stereoscopic retinal photos with interpretation by an ophthalmologist or optometrist documented and reviewed; without evidence of retinopathy*.
15. Check *7 standard field stereoscopic retinal photos with interpretation by an ophthalmologist or optometrist documented and reviewed; without evidence of retinopathy*.
- a. If *7 standard field stereoscopic retinal photos with interpretation by an ophthalmologist or optometrist documented and reviewed; without evidence of retinopathy* equals Yes, include in *Data Completeness Met and Performance Met*.
 - *Data Completeness Met and Performance Met* letter is represented as Data Completeness and Performance Rate in the Sample Calculation listed at the end of this document. Letter a⁴ equals 10 patients in the Sample Calculation.
 - b. If *7 standard field stereoscopic retinal photos with interpretation by an ophthalmologist or optometrist documented and reviewed; without evidence of retinopathy* equals No, proceed to check *Eye imaging validated to match diagnosis from 7 standard field stereoscopic retinal photos results documented and reviewed; with evidence of retinopathy*.

16. Check *Eye imaging validated to match diagnosis from 7 standard field stereoscopic retinal photos results documented and reviewed; with evidence of retinopathy.*
 - a. If *Eye imaging validated to match diagnosis from 7 standard field stereoscopic retinal photos results documented and reviewed; with evidence of retinopathy* equals Yes, include in *Data Completeness Met and Performance Met.*
 - *Data Completeness Met and Performance Met* letter is represented as Data Completeness and Performance Rate in the Sample Calculation listed at the end of this document. Letter a⁵ equals 10 patients in the Sample Calculation.
 - b. If *Eye imaging validated to match diagnosis from 7 standard field stereoscopic retinal photos results documented and reviewed; with evidence of retinopathy* equals No, proceed to check *Eye imaging validated to match diagnosis from 7 standard field stereoscopic retinal photos results documented and reviewed; without evidence of retinopathy.*
17. Check *Eye imaging validated to match diagnosis from 7 standard field stereoscopic retinal photos results documented and reviewed; without evidence of retinopathy.*
 - a. If *Eye imaging validated to match diagnosis from 7 standard field stereoscopic retinal photos results documented and reviewed; without evidence of retinopathy* equals Yes, include in the *Data Completeness Met and Performance Met.*
 - *Data Completeness Met and Performance Met* letter is represented as Data Completeness and Performance Rate in the Sample Calculation listed at the end of this document. Letter a⁶ equals 10 patients in the Sample Calculation.
 - b. If *Eye imaging validated to match diagnosis from 7 standard field stereoscopic retinal photos results documented and reviewed; without evidence of retinopathy* equals No, proceed to check *Low risk for retinopathy (no evidence of retinopathy in the prior year).*
18. Check *Low risk for retinopathy (no evidence of retinopathy in the prior year):*
 - a. If *Low risk for retinopathy (no evidence of retinopathy in the prior year)* equals Yes, include in the *Data Completeness Met and Performance Met.*
 - *Data Completeness Met and Performance Met* letter is represented as Data Completeness and Performance Rate in the Sample Calculation listed at the end of this document. Letter a⁷ equals 10 patients in the Sample Calculation.
 - b. If *Low risk for retinopathy (no evidence of retinopathy in the prior year)* equals No, proceed to check *Dilated eye exam was not performed, reason not otherwise specified.*
19. Check *Dilated eye exam was not performed, reason not otherwise specified:*
 - a. If *Dilated eye exam was not performed, reason not otherwise specified* equals Yes, include in the *Data Completeness Met and Performance Not Met.*
 - *Data Completeness Met and Performance Not Met* letter is represented as Data Completeness in the Sample Calculation listed at the end of this document. Letter c equals 30 patients in the Sample Calculation.
 - b. If *Dilated eye exam was not performed, reason not otherwise specified* equals No, proceed to check *Data Completeness Not Met.*

20. Check *Data Completeness Not Met*:

- If *Data Completeness Not Met*, the Quality Data Code or equivalent was not submitted. 20 patients have been subtracted from the Data Completeness Numerator in the Sample Calculation.

Sample Calculations

Data Completeness equals Performance Met (a^1 plus a^2 plus a^3 plus a^4 plus a^5 plus a^6 plus a^7 equals 70 patients) plus Performance Not Met (c equals 30 patients) divided by Eligible Population/Denominator (d equals 120 patients). All equals 100 patients divided by 120 patients. All equals 83.33 percent.

Performance Rate equals Performance Met (a^1 plus a^2 plus a^3 plus a^4 plus a^5 plus a^6 plus a^7 equals 70 patients) divided by Data Completeness Numerator (100 patients). All equals 70 patients divided by 100 patients. All equals 70.00 percent.

*See the posted measure specification for specific coding and instructions to submit this measure.

NOTE: Submission Frequency: Patient-Process

The measure diagrams were developed by CMS as a supplemental resource to be used in conjunction with the measure specifications. They should not be used alone or as a substitution for the measure specification.